



7 Lakewood Grove Burrill Lake NSW

4 2 4

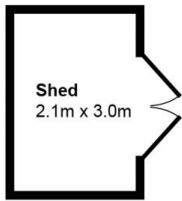
Easy living , immaculately presented home, designed for entertaining. Formal lounge and separate living room open out to the alfresco covered timber deck. Featuring 4 spacious bedrooms, master with WIR and ensuite. Outside a level landscaped garden wraps around the north east facing deck. Plenty of storage with a third garage/workshop and an extra garden shed. Located in a quiet cul-de-sac, only a 200 metre level walk to the new Burrill Lake fishing wharf and shops.

- Double garage with internal access
- 3rd Garage for your boat or workshop
- Brand new kitchen
- Ceiling fans throughout
- Combustion fireplace
- Neutral tones

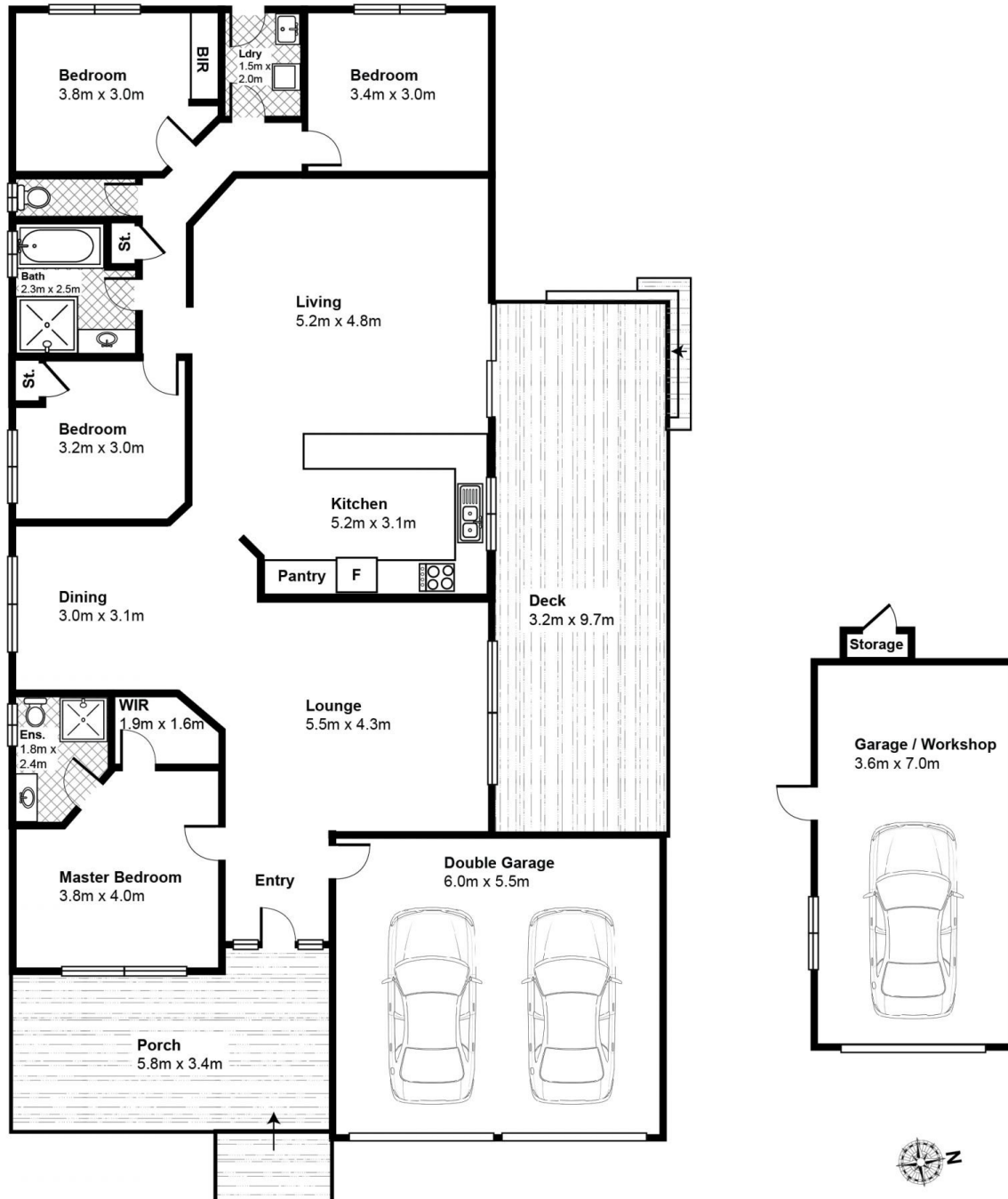
Price : \$ 664,000
Land Size : 700 sqm
View : <https://www.coopercoastalproperties.com.au/sale/nsw/shoalhaven/burrill-lake/residential/house/5834697>



Craig Cooper
0434 311 113



7 Lakewood Grove, Burrill Lake



Disclaimer: Whilst the utmost care has been taken to document the measurements of the property, all dimensions are estimates only, and should not be relied upon for accuracy. All parties should make and rely upon their own enquiries for accuracy.