



2 Gumley Lane Milton NSW

4  3  2 

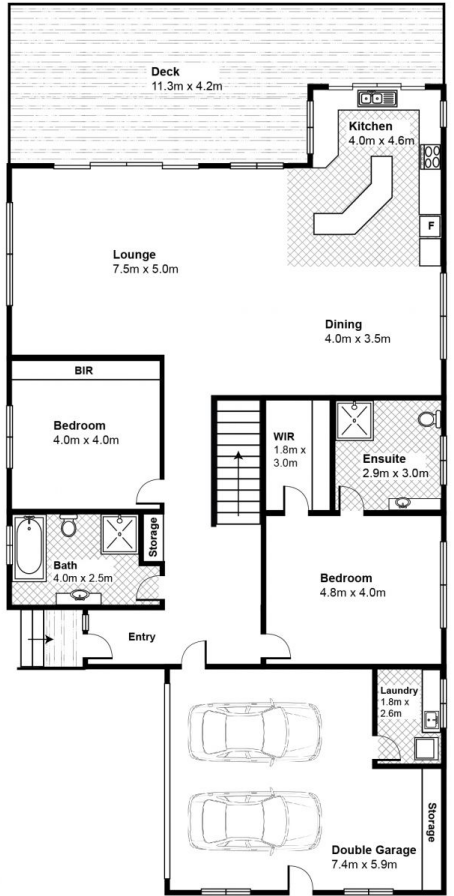
Aesthetically designed and finished with quality appointments this 'Hamptons' inspired residence benefits a centrally positioned location in the heart of the historic Milton township with every convenience within a leisurely stroll. Designed by local architect, Andrew Bell of Milton Design & Drafting, to seamlessly capture the expansive rural landscapes from the coast to the escarpment across two free flowing levels of accommodation on a manageable easy-care parcel of 740sqm with the opportunity to house a dual residence opportunity, perfect for those looking to capture the enormous holiday season visitors to the region.

Striking in its street appeal, with manicured grounds, the neutral tones and accents showcase the warmth of extensive weatherboard cladding and effortless flow of the covered timber entertaining decks that are bathed in natural sunlight. Immaculately presented throughout, the

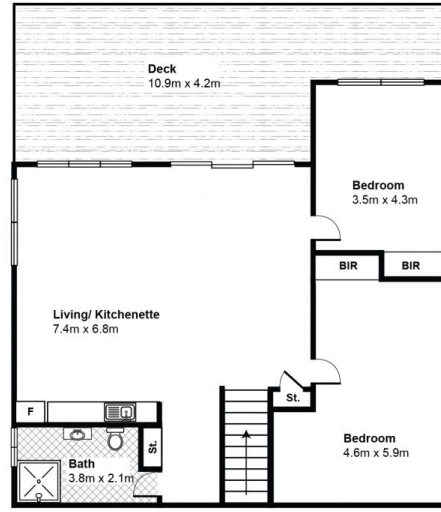
Price : \$ 1,290,000
Building Size : 281 sqm
Land Size : 740 sqm
View : <https://www.coopercoastalproperties.com.au/sale/nsw/shoalhaven/milton/residential/house/5834702>



Craig Cooper
0434 311 113



UPPER LEVEL



LOWER LEVEL

Disclaimer: Whilst the utmost care has been taken to document the measurements of the property, all dimensions are estimates only, and should not be relied upon for accuracy. All parties should make and rely upon their own enquiries for accuracy.

APPROX INTERNAL HOME AREA: 281.45m²

