



341 Croobyar Road Milton NSW

6  3  7 

Located on a prime 2.5 acre level block on Croobyar Rd, with stunning rural vistas looking out to the Budawang Ranges. Perfectly positioned to capture the Northern sun, North East and Southerly breezes. Enjoy the best of both worlds, living on a rural property - just 2 minutes to Milton township and 6 minutes to the pristine beaches of Mollymook. A rare find in a highly sought after area.

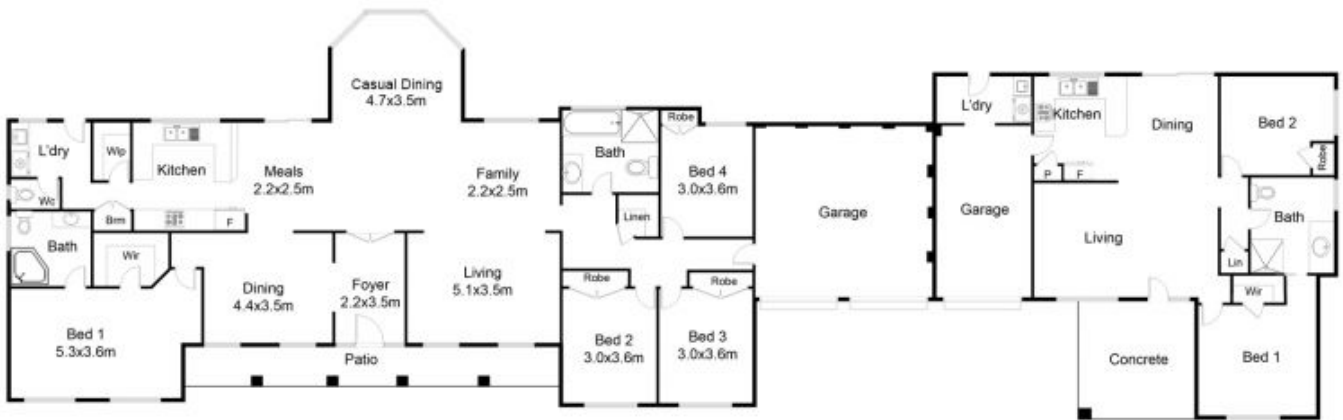
Offering generous interiors this single level, 6 bedroom 3 bathroom DUAL OCCUPANCY home is a must to inspect. Well designed, with an effective floorplan, providing privacy and peace and quiet for each residence. Ideally suited for the extended family, to care for elderly parents or to earn an extra rental income letting out one, or both residences for permanent or guest accommodation.

The main house is light filled with quality finishes, featuring

Building Size : 370 sqm
Land Size : 2.5 Acres
View : <https://www.coopercoastalproperties.com.au/sale/nsw/shoalhaven/milton/residential/house/5834724>



Craig Cooper
0434 311 113



Approx Internal Home Area: 260M²
Approx Internal Flat Area: 105M²

DISCLAIMER: ALL MEASUREMENTS ARE APPROXIMATE, NOT TO SCALE. FOR ILLUSTRATION PURPOSES ONLY.

