



7/10 Thomas Street Milton NSW

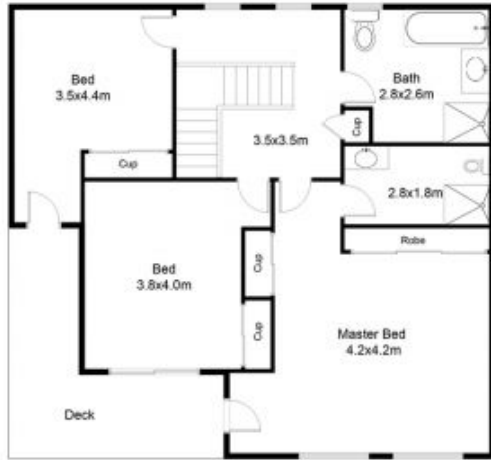
3  2  2 

What an opportunity - to live in a bright, well designed two storey townhouse on the doorstep of the groovy village of Milton. Milton is well recognised for its funky cafes, boutiques, restaurants & eclectic shops.

View : <https://www.coopercoastalproperties.com.au/sale/nsw/shoalhaven/milton/residential/house/5834733>

This townhouse enjoys gorgeous rural and ocean views over Milton, to Green Island and beyond. With north east orientation, all the bedrooms and living areas receive great light and natural air flow. The open plan living space has sliders which allows you to enjoy your sunny north facing courtyard. The upstairs level has a L shaped deck which can be accessed from all bedrooms and would probably be one of my favourite places at any time of day.

Upstairs there is a large central bathroom and a generous ensuite off the master bedroom. Plus there is a powder room/WC downstairs, adjacent to the laundry. The double



First Floor



Ground Floor

Approx Home Area: 219m²

DISCLAIMER: ALL MEASUREMENTS ARE APPROXIMATE, NOT TO SCALE. FOR ILLUSTRATION PURPOSES ONLY.

