



38 Slaughterhouse Road Milton NSW

3 2 2

On the fringe of Milton, this superbly priced 1/2 acre property has stunning views of those enviable green rolling hills all the way to Pigeon House and the Budawangs.

The home is light filled and cosy, and whilst it has been nicely renovated, there is still plenty of potential for a new owner to make it truly their own haven.

The outdoor space is largely a blank canvas ready for your inspiration - will you create a tropical green haven, OR fantastic veggie gardens OR perhaps, the Santa Fe desert scene is your preference.

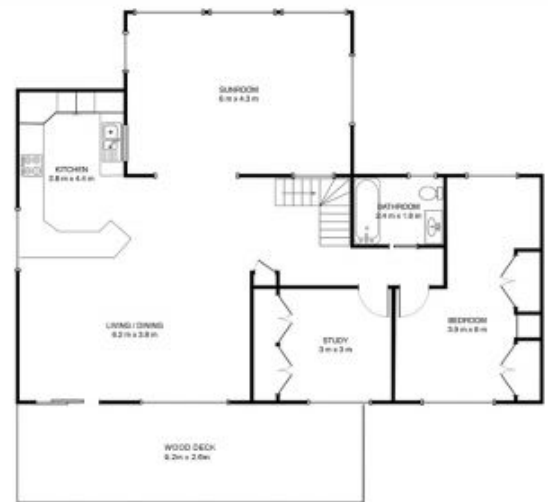
The big bonus, apart from the space, views and location, is the fantastic amounts of garaging, storage and workshop space.

Land Size : 2023 sqm

View : <https://www.coopercoastalproperties.com.au/sale/nsw/shoalhaven/milton/residential/home/5834741>



Craig Cooper
0434 311 113



Approx Ground Floor Area: 134m²

Approx First Floor Area: 130m²

DISCLAIMER: ALL MEASUREMENTS ARE APPROXIMATE, NOT TO SCALE. FOR ILLUSTRATION PURPOSES ONLY.

