

### 13 Denise Drive Lilli Pilli NSW

2 2 2

This Beachcomber style home of the 1960s exudes much of its original style and character with its rectangular architecture. The iconic Mid-century modern style is highly sought after and timeless for light and breezy coastal living. Sitting at the top of the block, lightly integrating with elevated views through to Grandfathers Gully Nature Reserve, this location is a knock out.

Denise Drive at Lilli Pilli is a blue ribbon address, with a choice of two private beaches at either end of the circuit and only minutes walk from home. Stroll along the headland walk to admire a unique stretch of coastline with fascinating geological formations and azure crystal water.

Upstairs is a light and sunny living area with wood heater and split system air-conditioning and a designer retro style ceiling fan and beautiful polished timber flooring.

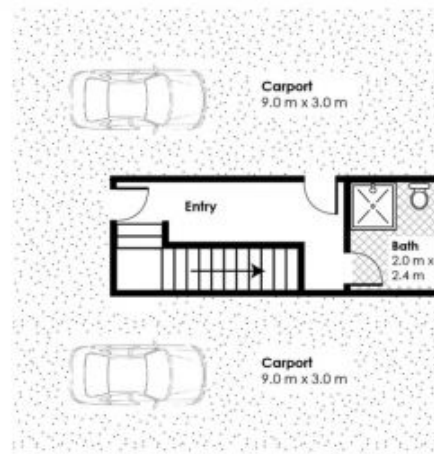
**Price** : \$ 620,000  
**Land Size** : 1050 sqm  
**View** : <https://www.coopercoastalproperties.com.au/sale/nsw/eurobodalla-coast/lilli-pilli/residential/house/5834754>



**Craig Cooper**  
0434 311 113



First Floor



Ground Floor

**Approx Home Area: 140m<sup>2</sup>**

DISCLAIMER: ALL MEASUREMENTS ARE APPROXIMATE, NOT TO SCALE. FOR ILLUSTRATION PURPOSES ONLY.

