



52 Wallaroy Drive Burrill Lake NSW

3 1 1

Walking distance to Burrill Lake shops and Lake this hip little home has plenty of style and liveability. The neutral tones in decor and quality flooring are an inspiring blank canvas. Presenting open plan living, bright kitchen with good storage, gas cooktop, separate lounge area and a fabulous undercover rear deck. Truly a neatly packaged property allowing ample scope for family entertaining.

Three good size bedrooms with robes are well incorporated in relation to the floor plan. The Master is privately spaced from the other two bedrooms and has the enhancement of a floor to ceiling window.

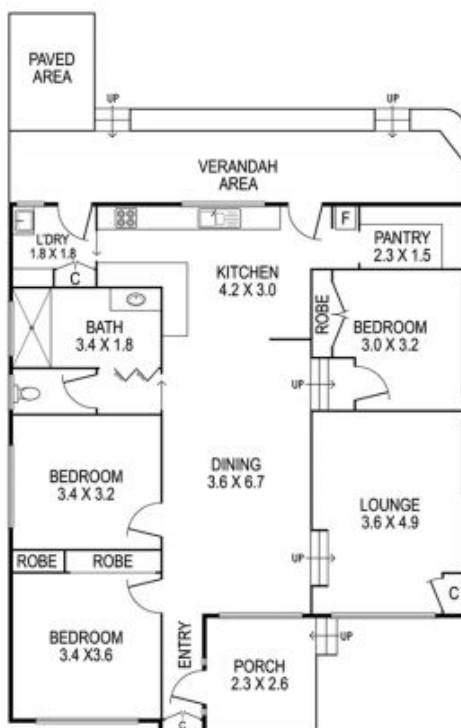
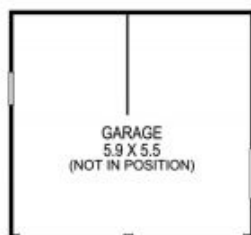
The block is level and fully fenced with delightful established gardens and fire pit area. Noting the double garage has been upgraded into a studio or home office for those who can work remotely.

We love :

Price : \$ 530,000
Building Size : 123 sqm
Land Size : 613 sqm
View : <https://www.coopercoastalproperties.com.au/sale/nsw/shoalhaven/burrill-lake/residential/house/5834766>



Craig Cooper
0434 311 113



INTERIOR	123 m ²
EXTERIOR	71 m ²
TOTAL	194 m ²

52 Wallaroy Drive, Burrill Lake



Disclaimer: The artist impressions and floorplans are indicative only, are not to scale and do not form part of any Contract of Sale. Any dimensions, finishes or specifications depicted are subject to change without notice. Consultants and agents do not warrant the accuracy of any information provided and do not accept any liability for negligence, any error, misrepresentation, discrepancy in the information or reliance thereon.

