



53 Wuru Drive Burrill Lake NSW

4  2  4 

This striking designer home exudes an incredible fusion of light and tranquility. The impressive entry features high vaulted ceilings and high set windows with expansive use of glass throughout. Zoned surround sound, ducted under floor air conditioning and high end finishes complete this beautiful home.

Large Gourmet kitchen offers Caesarstone bench tops with an added butlers pantry. The North facing living and dining flows to a huge entertaining deck with elevated wetland views.

We love:

Snowy River Gum timber flooring

Walk in pantry and Fisher Paykel appliances including 2 drawer dishwasher

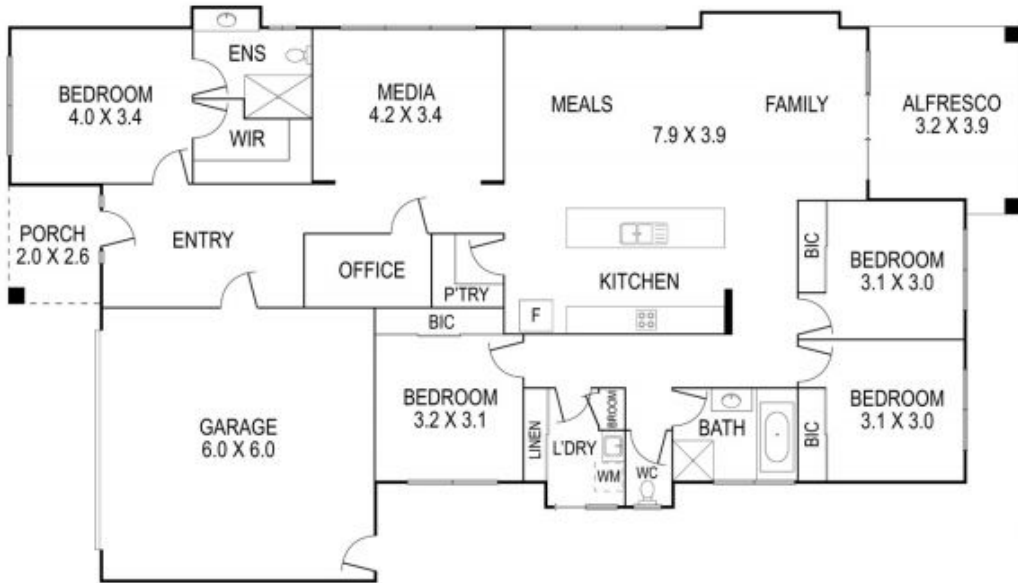
Generous sized carpeted bedrooms, with built-ins

Easy care landscaped native gardens and enclosed back

Price : \$895,000
Building Size : 242 sqm
Land Size : 804 sqm
View : <https://www.coopercoastalproperties.com.au/sale/nsw/shoalhaven/burrill-lake/residential/house/5893807>



Craig Cooper
0434 311 113



53 Wuru Drive, Burrill Lake

4 2 2

Disclaimer: The artist impressions and floorplans are indicative only, are not to scale and do not form part of any Contract of Sale. Any dimensions, finishes or specifications depicted are subject to change without notice. Consultants and agents do not warrant the accuracy of any information provided and do not accept any liability for negligence, any error, misrepresentation, discrepancy in the information or reliance thereon.

