



### 140B Narrawallee Creek Road Lake Conjola NSW

3  2  2 

Enjoy idyllic coastal and semi-rural living from this private 2.7 acre parklike property, surrounded by bushland and National Park.

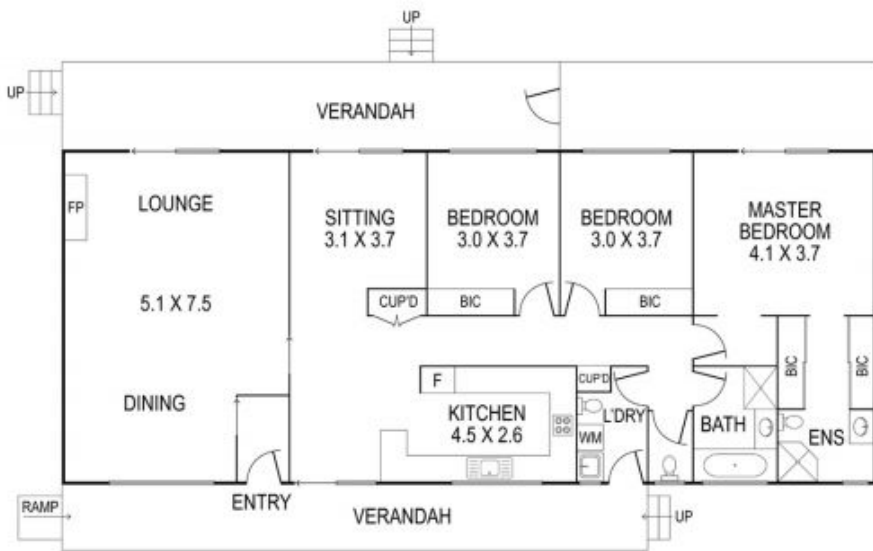
'Vida Park' is the perfect holiday retreat or forever home accessed by a 2km all weather private country road. Bush tracks and national parks line the edges of this sought after pocket, with beautiful Lake Conjola and pristine Conjola Beach nearby. Fishing enthusiasts will enjoy rock fishing from Buckley's Point.

The property has lots of wildlife including kangaroos, wallabies and a myriad of beautiful birds. There are nearby trails to explore whilst civilisation is only a 10 minute drive away - with Lake Conjola township offering a choice of two cafes, general store, bottle shop and minimart.

**Price** : \$ 825,000  
**Building Size** : 232 sqm  
**Land Size** : 1.09 ha  
**View** : <https://www.coopercoastalproperties.com.au/sale/nsw/shoalhaven/lake-conjola/residential/acreagesemirural/5919316>



**Craig Cooper**  
0434 311 113



INTERIOR	137 m <sup>2</sup>
EXTERIOR	95 m <sup>2</sup>
<b>TOTAL</b>	<b>232 m<sup>2</sup></b>

**140b Narrawallee Creek Road, Lake Conjola**

3 2 2

Disclaimer: The artist impressions and floorplans are indicative only, are not to scale and do not form part of any Contract of Sale. Any dimensions, finishes or specifications depicted are subject to change without notice. Consultants and agents do not warrant the accuracy of any information provided and do not accept any liability for negligence, any error, misrepresentation, discrepancy in the information or reliance thereon.

