



30 Bolwarra Avenue Ulladulla NSW

4  2  4 

This near new residence is a winning combination in sophistication and contemporary design. Starting with the statement entrance opening into a welcoming wide entry hall, the well thought out floorplan offers privacy for parents with large master with ensuite and WIR at the front of house. The light filled open plan living / dining area forms the central hub and is perfect for easy living and annexes a private alfresco space. The media room is adjacent to kitchen/living/dining area and 3 additional bedrooms are accessed from the rear of house.

Contrasting the warm neutral tones of the living areas, are the moody finishes in the on-trend ultra modern kitchen, bathrooms and laundry highlighted with natural wood.

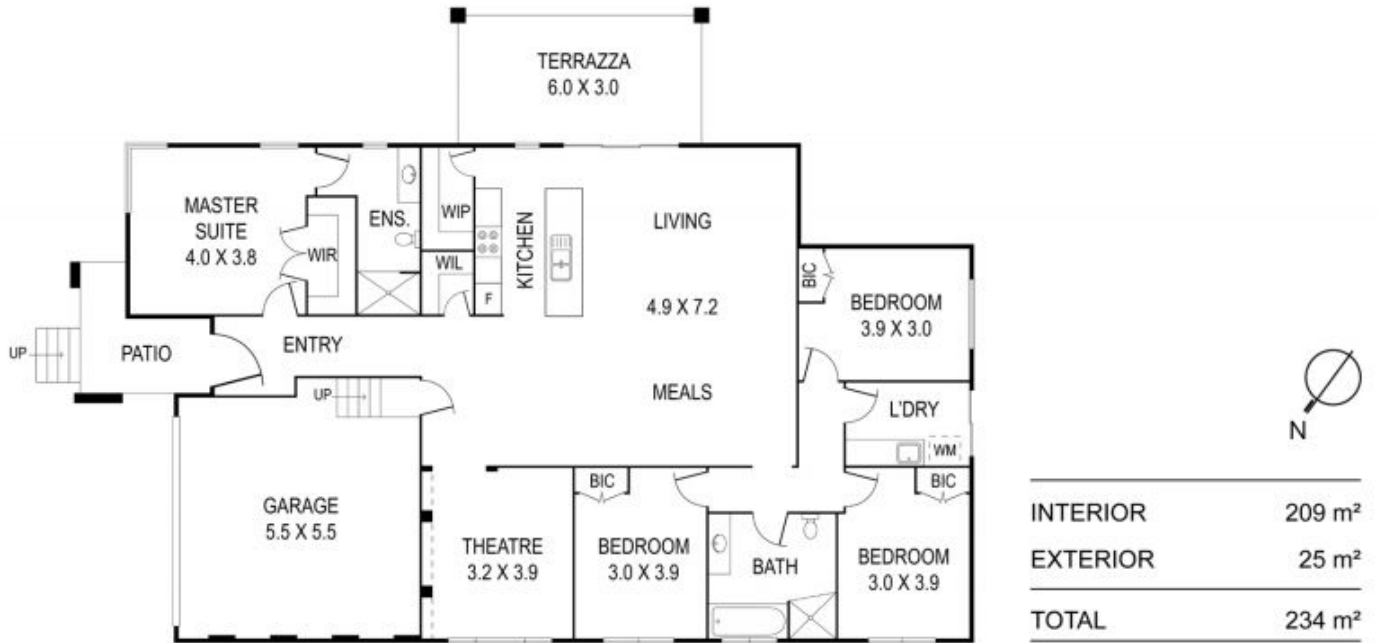
The double garage offers extra height to accommodate larger vehicles with a single full width garage door.

We love:

Building Size : 209 sqm
Land Size : 623 sqm
View : <https://www.coopercoastalproperties.com.au/sale/nsw/shoalhaven/ulladulla/residential/house/6190347>



Craig Cooper
0434 311 113



30 Bolwarra Avenue, Ulladulla

4 2 2

Disclaimer: The artist impressions and floorplans are indicative only, are not to scale and do not form part of any Contract of Sale. Any dimensions, finishes or specifications depicted are subject to change without notice. Consultants and agents do not warrant the accuracy of any information provided and do not accept any liability for negligence, any error, misrepresentation, discrepancy in the information or reliance thereon.

