



### 315 Little Forest Road Milton NSW

3  3  2 

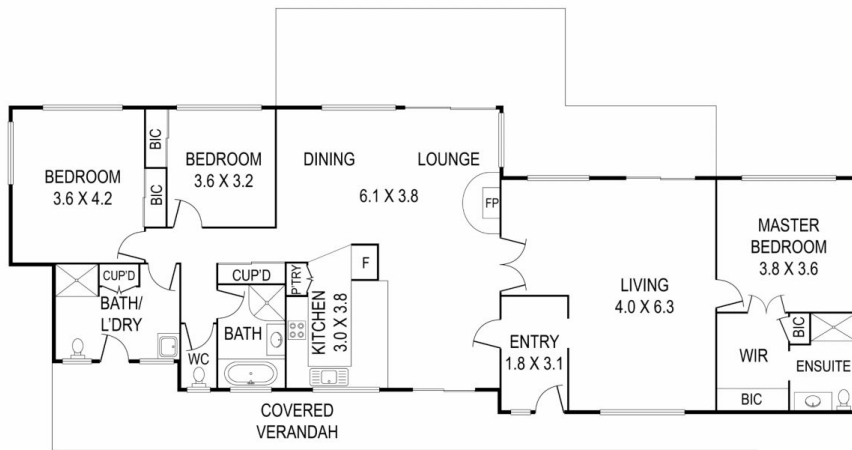
Enjoy the privacy of a beautiful bushland setting amongst rolling open paddocks within a short drive to the thriving historic Milton and the beautiful Mollymook beaches

The 3 bedroom brick home provides comfortable family living across a spacious single level with pastoral views from every window. The flexible floorplan offers the possibility to separate into two self-contained living zones.

Zoned E4 Environmental Living, this acreage has plenty of scope for the addition of horses, livestock, running your own agribusiness or trade.

Existing infrastructure comprising of a large 3 bay shed, 3 dams and 3 water tanks providing opportunities for you to run horses or cattle or sit back and enjoy your rural retreat.

**Price** : \$1,950,000 - \$2,050,000  
**Building Size** : 155 sqm  
**Land Size** : 9 ha  
**View** : <https://www.coopercoastalproperties.com.au/sale/nsw/shoalhaven/milton/residential/acreagesemirural/6363548>



CARPORT  
7.0 X 6.0

INTERIOR	155 m <sup>2</sup>
EXTERIOR	105 m <sup>2</sup>
<b>TOTAL</b>	<b>260 m<sup>2</sup></b>

## 315 Little Forest Road

3 3 2

Disclaimer: The artist impressions and floorplans are indicative only, are not to scale and do not form part of any Contract of Sale. Any dimensions, finishes or specifications depicted are subject to change without notice. Consultants and agents do not warrant the accuracy of any information provided and do not accept any liability for negligence, any error, misrepresentation, discrepancy in the information or reliance thereon.

