



## 10 Whatman Place Milton NSW

Perched high and overlooking the rolling Milton countryside, you will enjoy living in this spacious, quality built home featuring generously proportioned rooms and a flexible floorplan.

The master bedroom is placed in the front of the home, with a large, well planned walk-in robe and spacious ensuite. Step out onto the front balcony and enjoy the big views over the Milton countryside.

The extra large open plan kitchen, dining and living is the central hub of the home, opening out to a huge alfresco deck - Just perfect for large family dinners & entertaining.

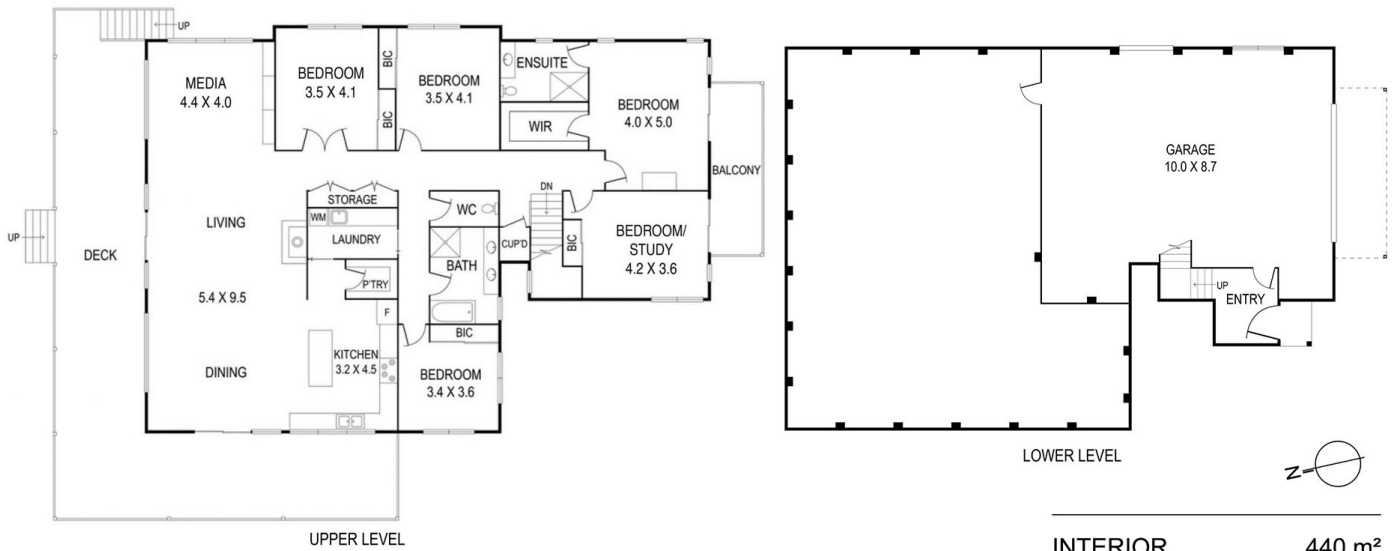
Quality kitchen fittings with caesarstone bench tops, walk in pantry, hardwood timber floors, high ceilings and ducted air conditioning will also delight.

5  2  4 

**Price** : Price By Negotiation  
**Building Size** : 311 sqm  
**Land Size** : 750 sqm  
**View** : <https://www.coopercoastalproperties.com.au/sale/nsw/shoalhaven/milton/residential/house/6470679>



**Craig Cooper**  
0434 311 113



INTERIOR	440 m <sup>2</sup>
EXTERIOR	92 m <sup>2</sup>
TOTAL	532 m <sup>2</sup>

## 10 Whatman Place, Milton

5 2 2

Disclaimer: The artist impressions and floorplans are indicative only, are not to scale and do not form part of any Contract of Sale. Any dimensions, finishes or specifications depicted are subject to change without notice. Consultants and agents do not warrant the accuracy of any information provided and do not accept any liability for negligence, any error, misrepresentation, discrepancy in the information or reliance thereon.

