



3/13 Shepherd Street Mollmook NSW

3  2  1 

You will love this Architect designed, 'Industrial chic' inspired townhouse perfectly positioned just 300 metres from the sand of Mollmook Beach

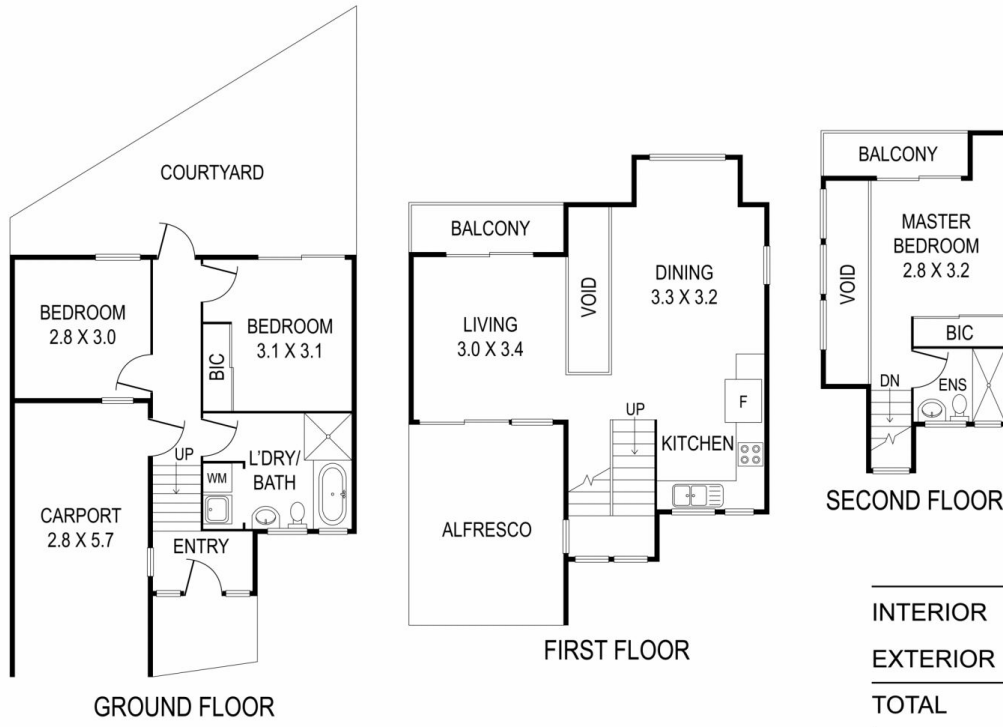
Capturing northern sun and sea breezes, this eco designed townhouse in a small complex of three, enjoys a private location while enjoying close proximity to Mollmook Golf course, Surf Club and cafes. Wake up to the sound of the waves, then head out for a morning walk or surf. At home, relax or entertain friends on the covered deck or al fresco area, or take a short drive to some of the region's best restaurants, including Bannisters, Gwylo, Cupitts and more.

With two balconies, a large north facing al fresco entertaining deck and a private courtyard, this 3 bedroom, tri-level townhouse offers plenty of places to relax and enjoy the refreshing sea air. The master with its own

Price : Price On Application
Building Size : 95 sqm
Land Size : 166 sqm
View : <https://www.coopercoastalproperties.com.au/sale/nsw/shoalhaven/mollmook/residential/townhouse/6744276>



Craig Cooper
0434 311 113



INTERIOR	95 m ²
EXTERIOR	60 m ²
TOTAL	155 m²

3/13 Shepherd Street, Mollymook

3 2 1

Disclaimer: The artist impressions and floorplans are indicative only, are not to scale and do not form part of any Contract of Sale. Any dimensions, finishes or specifications depicted are subject to change without notice. Consultants and agents do not warrant the accuracy of any information provided and do not accept any liability for negligence, any error, misrepresentation, discrepancy in the information or reliance thereon.

