



### 9 Valley Drive Conjola Park NSW

3  2  2 

This newly completed split level home is ready for you to move in and start enjoying the laid back coastal lifestyle of Conjola Park. Overlooking adjacent farmland and only a 500 metre stroll to the lake, boat ramp and lakeside walking track, you'll be perfectly positioned to immerse yourself in all of the leisure activities on offer in beautiful Lake Conjola.

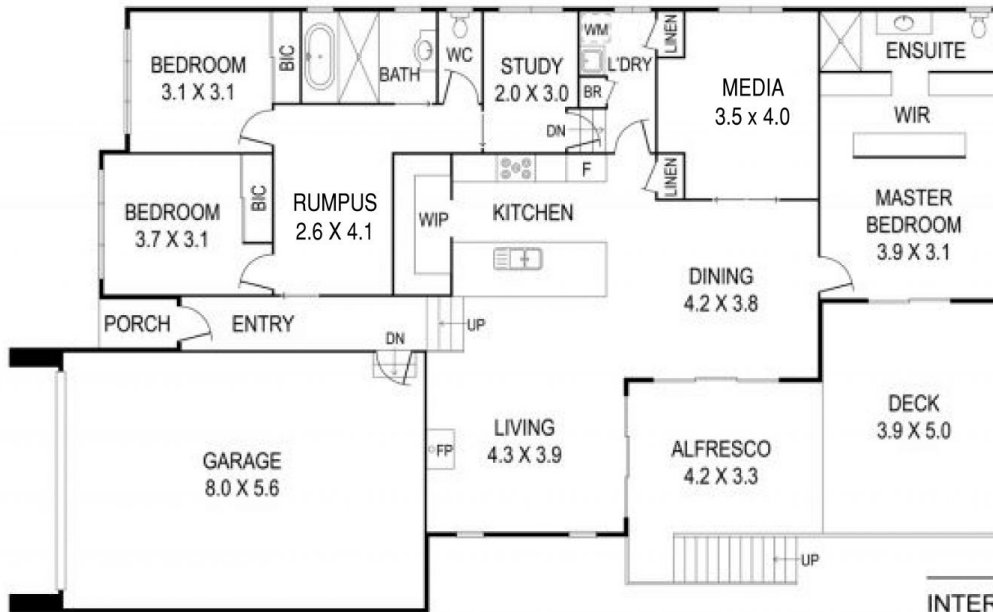
The large north facing living/dining area is where your friends and family will congregate, adjacent to the central gourmet kitchen and elevated deck. The large walk in pantry, electric oven and gas hotplate are great additions when you're ready to cook up a storm or step out to the huge deck to enjoy a drink, start up the barbecue and enjoy the coastal breezes and view to the lake.

The well designed master suite is spacious and private from the rest of the house. Integrated in the home design is

**Price** : Price By Negotiation  
**Building Size** : 200 sqm  
**Land Size** : 601 sqm  
**View** : <https://www.coopercoastalproperties.com.au/sale/nsw/shoalhaven/conjola-park/residential/house/6746445>



**Craig Cooper**  
0434 311 113



INTERIOR	200 m <sup>2</sup>
EXTERIOR	40 m <sup>2</sup>
TOTAL	240 m <sup>2</sup>

## 9 Valley Drive, Conjola Park

3 2 2

Disclaimer: The artist impressions and floorplans are indicative only, are not to scale and do not form part of any Contract of Sale. Any dimensions, finishes or specifications depicted are subject to change without notice. Consultants and agents do not warrant the accuracy of any information provided and do not accept any liability for negligence, any error, misrepresentation, discrepancy in the information or reliance thereon.

