



197-201 Princes Highway Milton NSW

44 🚗

The 2,662 square metre property on the corner of Prince Highway and Croobyar Road Milton, currently operating as the Heritage Bakery is offered for sale on a WIWO basis.

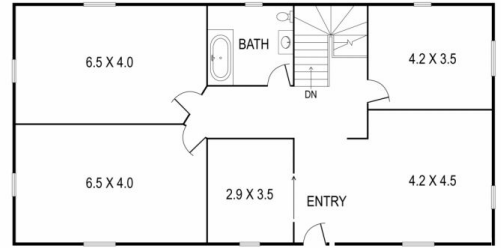
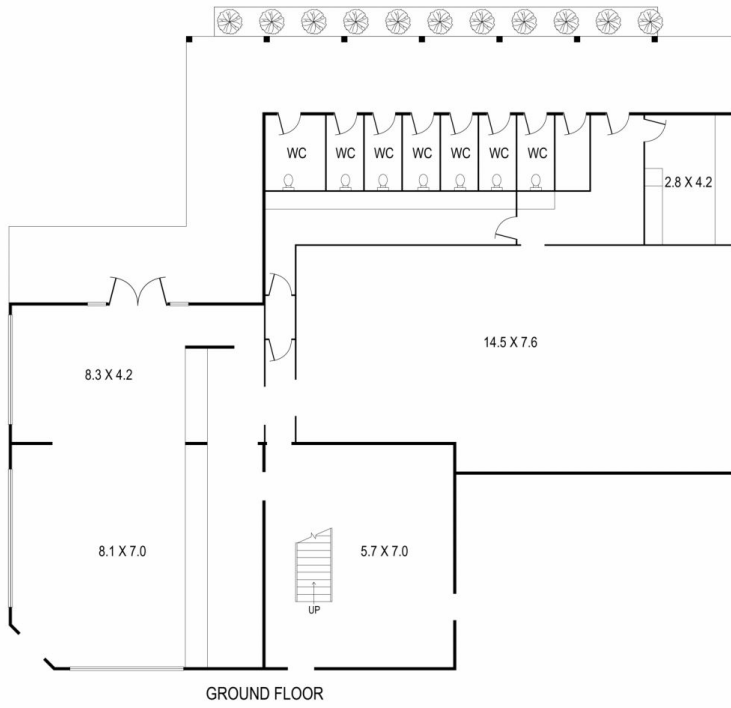
The Heritage Bakery is recognisable by its distinctive historic façade and its prime Highway frontage. Currently operating 7 days per week, with off street parking for up to 44 vehicles, indoor and outdoor seating downstairs, external toilet block and a large commercial kitchen.

This wonderful site is a rare opportunity to invest in an enviable location to run your own business.

Building Size : 459 sqm
Land Size : 2662 sqm
View : <https://www.coopercoastalproperties.com.au/sale/nsw/shoalhaven/milton/commercial/retail/6845989>



Craig Cooper
0434 311 113



FIRST FLOOR

INTERIOR	459 m ²
EXTERIOR	82 m ²
TOTAL	541 m ²

The Heritage Bakery, Milton

1 

Disclaimer: The artist impressions and floorplans are indicative only, are not to scale and do not form part of any Contract of Sale. Any dimensions, finishes or specifications depicted are subject to change without notice. Consultants and agents do not warrant the accuracy of any information provided and do not accept any liability for negligence, any error, misrepresentation, discrepancy in the information or reliance thereon.

