



23 Dowling Street Ulladulla NSW

4  2  1 

Explore nature on your doorstep, relax in the peaceful, quiet surroundings and take in the view of Pigeon House Mountain. This fully renovated four bedroom, single level home on the eastern side of Ulladulla enjoys the perfect position:

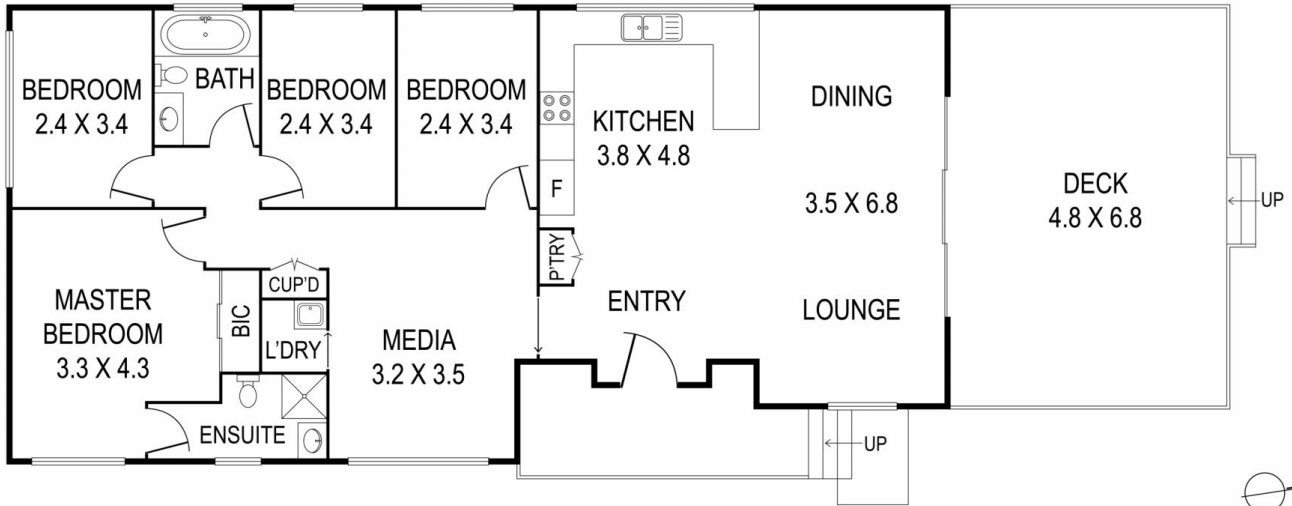
- 200 metre walk to Rennies Beach via track at end of street
- 90 metres to the extensive Walking Trails of South Pacific Heathland
- 2 minute drive to Ulladulla CBD with its award winning restaurants, cafes, specialty shopping, schools and Ulladulla Harbour
- Preschool opposite

The coastal styled rendered brick home has been extensively renovated and is ready for you to move in and

Price : \$ 982,500
Building Size : 115 sqm
Land Size : 610 sqm
View : <https://www.coopercoastalproperties.com.au/sale/nsw/shoalhaven/ulladulla/residential/house/6846009>



Craig Cooper
0434 311 113



INTERIOR	115 m ²
EXTERIOR	43 m ²
TOTAL	158 m ²

23 Dowling Street, Ulladulla

4 2

Disclaimer: The artist impressions and floorplans are indicative only, are not to scale and do not form part of any Contract of Sale. Any dimensions, finishes or specifications depicted are subject to change without notice. Consultants and agents do not warrant the accuracy of any information provided and do not accept any liability for negligence, any error, misrepresentation, discrepancy in the information or reliance thereon.

