



780 Croobyar Road Milton NSW

4  3  2 

This classic 4 bedroom country home set on a stunningly picturesque parcel of land offers a rural sanctuary with views of majestic mountains, rolling pastures and bordering on National Park.

Suitable for cattle or horses, or just sit back and immerse yourself in nature, enjoying the bucolic views, peaceful nature walks, practice your golf swing or enjoy horse riding trails - all from within your own private domain.

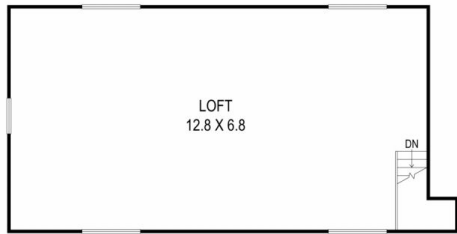
This remarkable 19.47 Hectare property is a rare find, with so much cleared land set amongst groves of majestic trees, an abundance of water plus cattle yard and machinery shed.

The elevated home offers beautiful views from almost every room as well as from the traditional country style

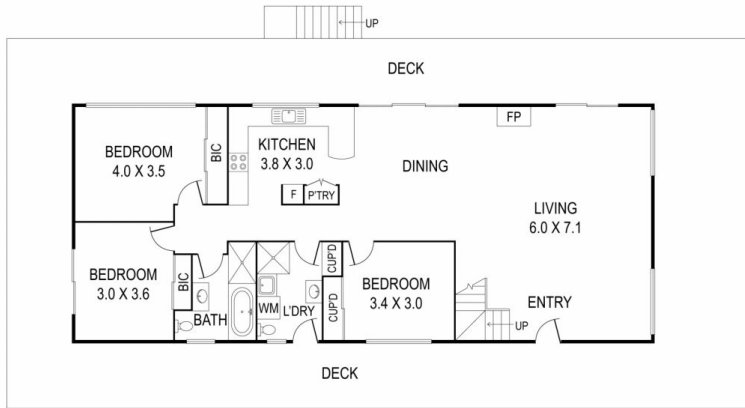
Building Size : 215 sqm
Land Size : 19.47 ha
View : <https://www.coopercoastalproperties.com.au/sale/nsw/shoalhaven/milton/residential/rural/6887900>



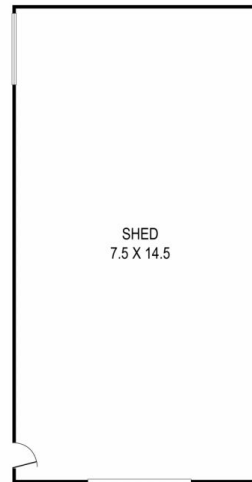
Craig Cooper
0434 311 113



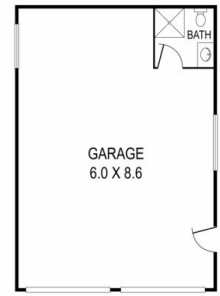
FIRST FLOOR



GROUND FLOOR



(NOT IN POSITION)



(NOT IN POSITION)



INTERIOR	215 m ²
EXTERIOR	297 m ²
TOTAL	512 m ²

780 Croobyar Road, Milton

3 2 2

Disclaimer: The artist impressions and floorplans are indicative only, are not to scale and do not form part of any Contract of Sale. Any dimensions, finishes or specifications depicted are subject to change without notice. Consultants and agents do not warrant the accuracy of any information provided and do not accept any liability for negligence, any error, misrepresentation, discrepancy in the information or reliance thereon.

