



### 13 Windemere Drive Conjola Park NSW

3  2  2 

Embrace the relaxed coastal lifestyle in the beautiful lakeside town of Conjola Park. This 5 year old coastal cottage overlooking the sparkling waters of Lake Conjola offers lake views from kitchen, living, master and north facing entertaining deck. Light and bright with vaulted ceilings, highlight windows and a cool neutral palette, the 3 bedroom home is just a 150 metre walk to the lake's edge, lakeside walking track and reserve.

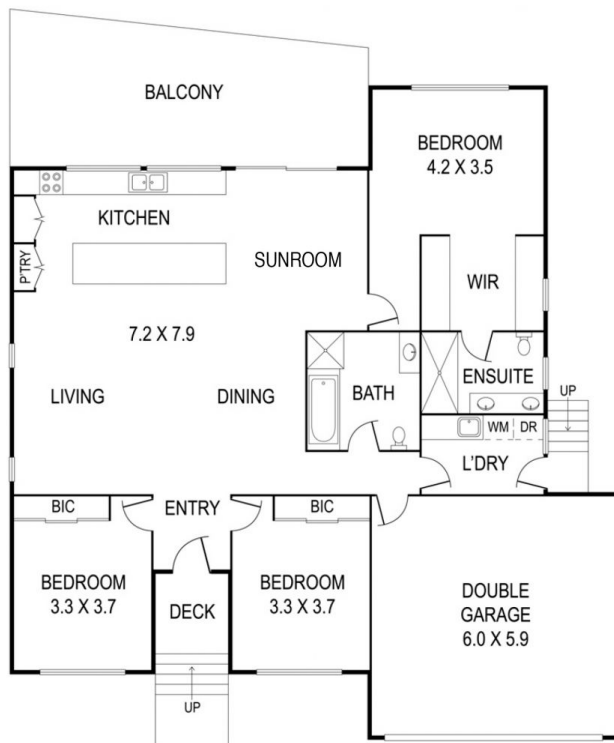
Lake Conjola opens to the stunning Conjola Beach and the well known surfing break of Green Island. This amazing unspoilt playground will suit enthusiasts of fishing, swimming, boating, water skiing, kayaking, bushwalking, surfing and paddle boarding.


The perfect base for a holiday cottage, downsizers or young families, with the potential to extend or add a second

**Building Size** : 182 sqm  
**Land Size** : 668 sqm  
**View** : <https://www.coopercoastalproperties.com.au/sale/nsw/shoalhaven/conjola-park/residential/house/6932332>



**Craig Cooper**  
0434 311 113



N	
	
INTERIOR	182 m <sup>2</sup>
EXTERIOR	39 m <sup>2</sup>
TOTAL	221 m <sup>2</sup>

## 13 Windemere Drive, Conjola Park

3  2  2 

Disclaimer: The artist impressions and floorplans are indicative only, are not to scale and do not form part of any Contract of Sale. Any dimensions, finishes or specifications depicted are subject to change without notice. Consultants and agents do not warrant the accuracy of any information provided and do not accept any liability for negligence, any error, misrepresentation, discrepancy in the information or reliance thereon.

