



**1/11 Witherington Avenue Ulladulla NSW**

2  1  2 

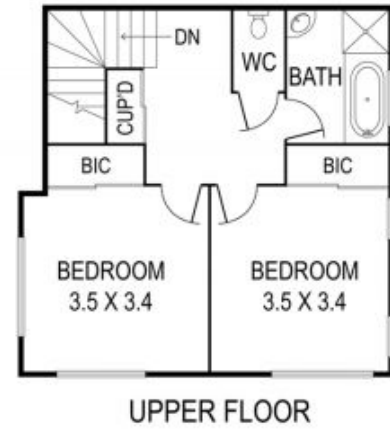
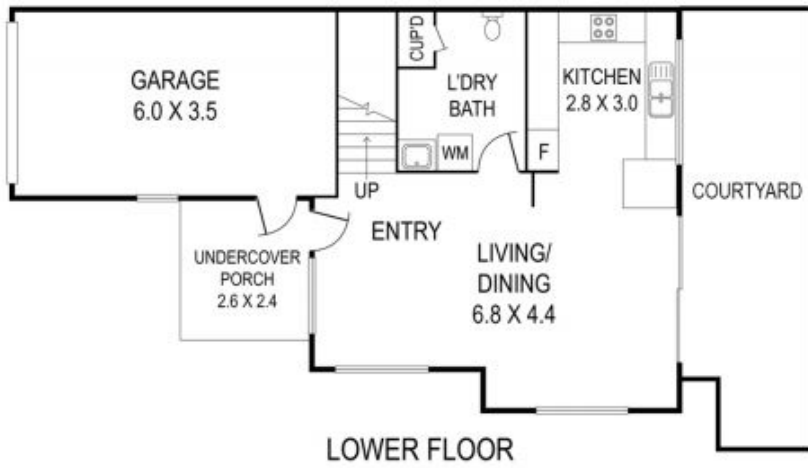
Bright and airy, this 2 bedroom, 2 storey townhouse with single lock up garage is the perfect option for downsizing or investment in our popular coastal destination. Enjoy the light filled kitchen/dining/living space opening out onto the sunny private courtyard with covered outdoor entertaining area and separate access to street. The well maintained townhouse which has been freshly painted and carpeted and had a new dishwasher and inverter air conditioner installed, offers two queen size bedrooms and bathroom upstairs with internal laundry and extra toilet downstairs. Positioned in a small, quiet street and an easy walk to the top end of town, this modern townhouse with north east aspect and rendered brick exterior, sitting at the front of a well-managed and beautifully maintained complex of three ticks all the boxes.

**Price** : \$ 610,000  
**Building Size** : 149 sqm  
**Land Size** : 847.2 sqm  
**View** : <https://www.coopercoastalproperties.com.au/sale/nsw/shoalhaven/ulladulla/residential/townhouse/7166181>



**Craig Cooper**  
0434 311 113

Located close to schools, shops and medical centres, this



INTERIOR	149 m <sup>2</sup>
EXTERIOR	42 m <sup>2</sup>
TOTAL	191 m <sup>2</sup>

2 1.5 1

## 1/11 Witherington Avenue, Ulladulla

Disclaimer: The artist impressions and floorplans are indicative only, are not to scale and do not form part of any Contract of Sale. Any dimensions, finishes or specifications depicted are subject to change without notice. Consultants and agents do not warrant the accuracy of any information provided and do not accept any liability for negligence, any error, misrepresentation, discrepancy in the information or reliance thereon.

