



36 Lake View Drive Burrill Lake NSW

2  1  1 

Original coastal cottage ideally located 60 metres from beautiful Burrill Lake where you can fish, swim, kayak and just 200 metres to the boat ramp at Barker Reserve for all your boating activities.

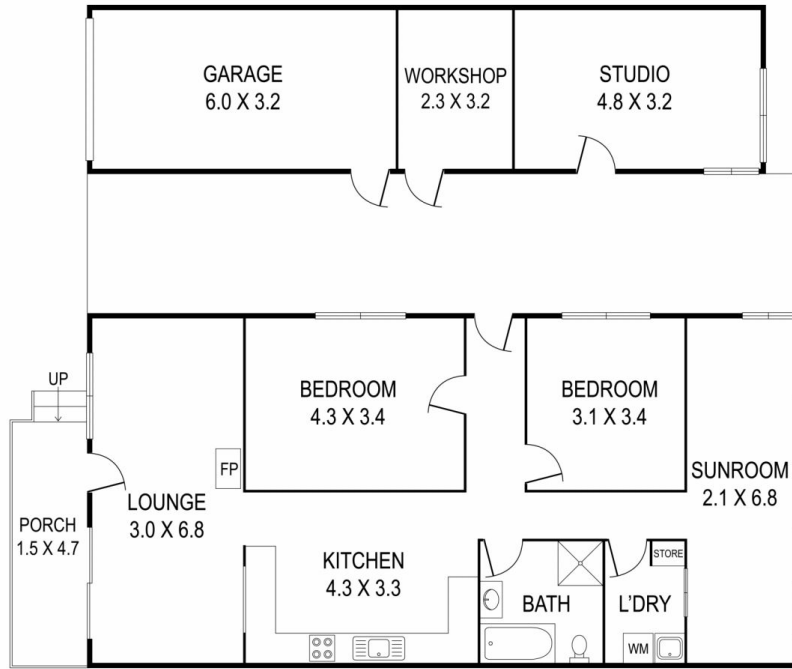
Sip your morning beverage in the bright, north facing sunroom, before taking off on an early morning bike ride around the lake foreshores, enjoy a peaceful canoe or paddle board in the pristine lake, or an invigorating surf or swim in one of the nearby beaches, then pick up croissants and fresh sourdough at nearby Lagom bakery on your way home.

The cottage, sitting on a level 556m2 block, is ripe for renovation and offers potential for investors or a great entry point for first home buyers.

Building Size : 98 sqm
Land Size : 556 sqm
View : <https://www.coopercoastalproperties.com.au/sale/nsw/shoalhaven/burrill-lake/residential/house/7208447>



Craig Cooper
0434 311 113



INTERIOR	98 m ²
EXTERIOR	90 m ²
TOTAL	188 m ²

36 Lake View Drive, Burrill Lake

2 1 1

Disclaimer: The artist impressions and floorplans are indicative only, are not to scale and do not form part of any Contract of Sale. Any dimensions, finishes or specifications depicted are subject to change without notice. Consultants and agents do not warrant the accuracy of any information provided and do not accept any liability for negligence, any error, misrepresentation, discrepancy in the information or reliance thereon.

