



14 Budawang Drive Ulladulla NSW

6 3 3

Capturing ocean views and cooling coastal breezes, this generously sized two storey family home is conveniently located within reach of beaches, schools, shops and Leisure Centre.

Entertain or enjoy family meals in the spacious open plan kitchen, dining, living area opening onto the deck with those gorgeous ocean vistas. Also upstairs is the huge master suite at front of the home, an additional 3 bedrooms, bathroom and media room. Downstairs could be a great space for teenagers or extended family with two bedrooms, huge rumpus area, bathroom, kitchen/laundry. A triple garage with internal access provides plenty of parking for all.

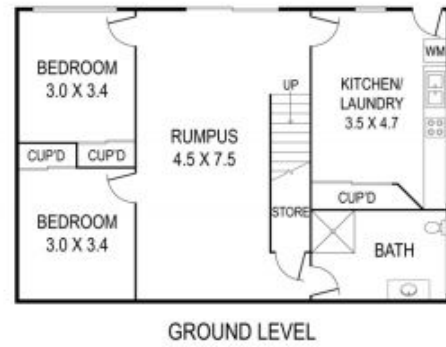
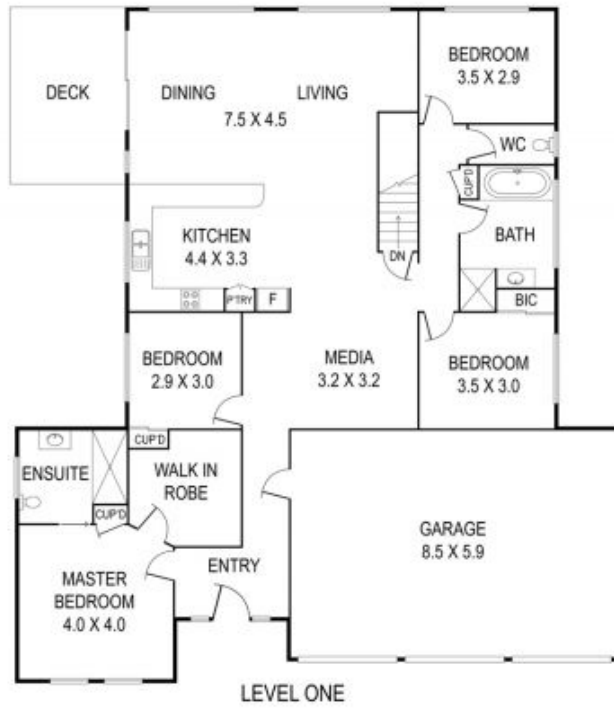
We love:

* Living & media areas upstairs

Land Size : 732 sqm
View : <https://www.coopercoastalproperties.com.au/sale/nsw/shoalhaven/ulladulla/residential/house/7231616>



Craig Cooper
0434 311 113



INTERIOR	296 m ²
EXTERIOR	14 m ²
TOTAL	310 m ²

6 3 3

14 Budawang Drive, Ulladulla

Disclaimer: The artist impressions and floorplans are indicative only, are not to scale and do not form part of any Contract of Sale. Any dimensions, finishes or specifications depicted are subject to change without notice. Consultants and agents do not warrant the accuracy of any information provided and do not accept any liability for negligence, any error, misrepresentation, discrepancy in the information or reliance thereon.

