



11 Morris Street Ulladulla NSW

4 2 4

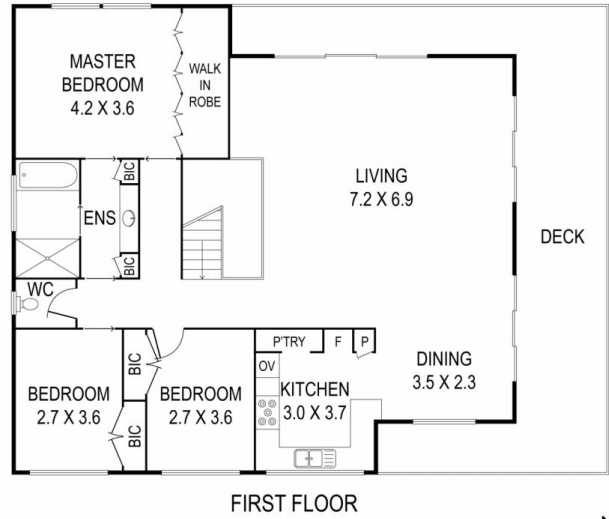
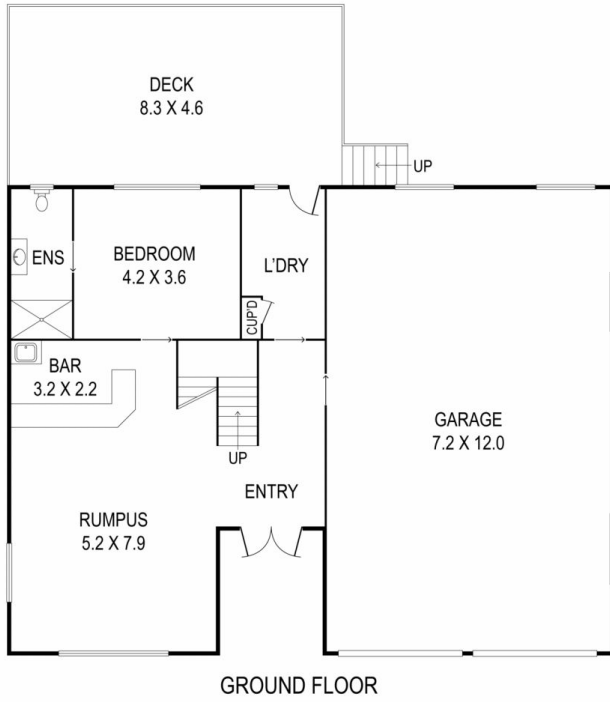
Enjoying ocean views as far north as St Georges Headland from balcony, living room and master, this large two storey brick home enjoys an elevated position to capture those cooling coastal breezes. The central position in a quiet street is within walking distance of the Leisure Centre, tennis courts, schools, CBD and beautiful Ulladulla Harbour.

The spacious family home offers 3 bedrooms, kitchen, bathroom and open plan living upstairs, opening onto a wraparound deck with ocean views and overlooking the pool. Downstairs would make a great teenager retreat or guest accommodation with another bedroom, ensuite bathroom plus huge games room and bar. The 4 car garage offers plenty of parking for cars, toys, boats and more.

Building Size : 304 sqm
Land Size : 658 sqm
View : <https://www.coopercoastalproperties.com.au/sale/nsw/shoalhaven/ulladulla/residential/house/7244483>



Craig Cooper
0434 311 113



INTERIOR	304 m ²
EXTERIOR	80 m ²
TOTAL	384 m ²

4 2 4

11 Morris Street, Ulladulla

Disclaimer: The artist impressions and floorplans are indicative only, are not to scale and do not form part of any Contract of Sale. Any dimensions, finishes or specifications depicted are subject to change without notice. Consultants and agents do not warrant the accuracy of any information provided and do not accept any liability for negligence, any error, misrepresentation, discrepancy in the information or reliance thereon.

