

839 Woodstock Road Milton NSW

3  2  2 

Relax and enjoy the panoramic ocean views from the elevated deck. Dining room, kitchen & study also enjoy the spectacular views. The existing 3 bedroom brick home provides comfortable family living across a spacious single level with potbelly stove in the living area - perfect for winter nights. There are 3 cleared acres at the top with existing infrastructure including two large sheds, dam, water tanks and a 4WD track to cleared 4 acres in the valley below, perfect for family and friends to enjoy camping and ideal for horses.

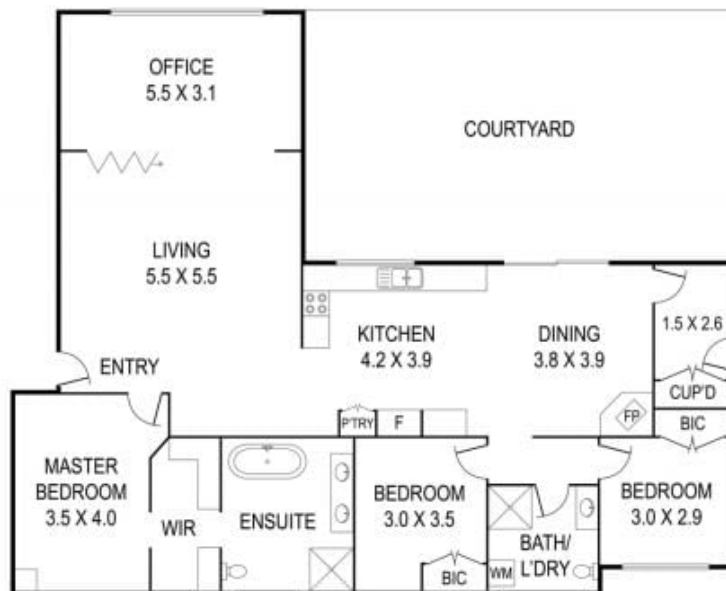
When you are ready to leave your private rural sanctuary, head to nearby Milk Haus cafe just a 6km drive, or nearby towns of Milton and Ulladulla, and gorgeous South Coast beaches just 15km away.

We love:

Price : By Negotiation
Building Size : 149 sqm
Land Size : 40 ha
View : <https://www.coopercoastalproperties.com.au/sale/nsw/shoalhaven/milton/residential/rural/7263247>



Craig Cooper
0434 311 113



INTERIOR	149 m ²
EXTERIOR	116 m ²
TOTAL	265 m ²

839 Woodstock Road, Woodburn

3 2 2

Disclaimer: The artist impressions and floorplans are indicative only, are not to scale and do not form part of any Contract of Sale. Any dimensions, finishes or specifications depicted are subject to change without notice. Consultants and agents do not warrant the accuracy of any information provided and do not accept any liability for negligence, any error, misrepresentation, discrepancy in the information or reliance thereon.

