



## 29 Springfield Drive Mollymook NSW

4 3 2

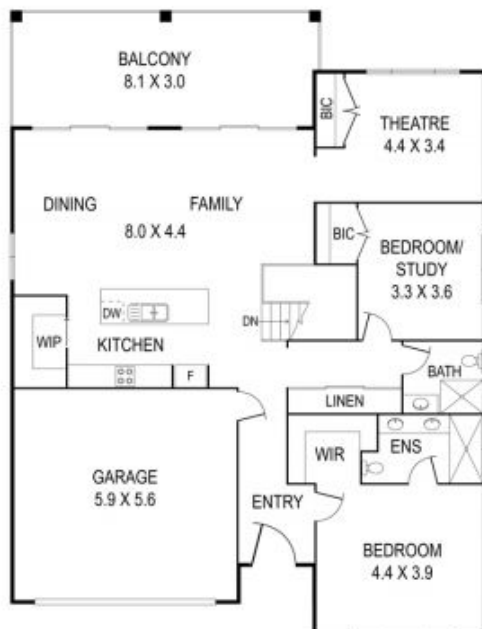
No expense has been spared with this near new home on a 719 m2 block. The two storey home features open plan living/dining opening onto elevated alfresco dining with leafy valley views.

- \* Cool, coastal elegance - bamboo floors, plantation shutters.
- \* Entertainer's kitchen features ceasarstone bench tops, double door fridge, gas cook top and electric oven, plus walk in pantry.
- \* Spacious living for families with four large bedrooms, three luxuriously appointed bathrooms, a media room and downstairs rumpus.
- \* Low-maintenance landscaped gardens and grassed rear yard with side access
- \* Plenty of space to park the boat or van.

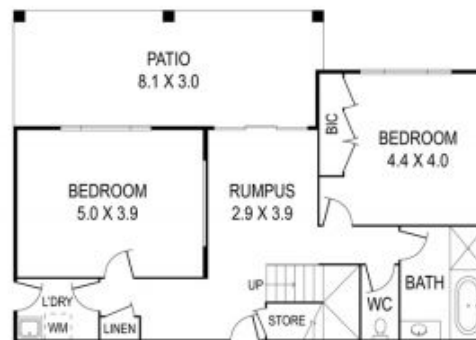
**Price** : \$1,299,000  
**Building Size** : 240 sqm  
**Land Size** : 719 sqm  
**View** : <https://www.coopercoastalproperties.com.au/sale/nsw/shoalhaven/mollymook/residential/house/7318835>



**Craig Cooper**  
0434 311 113



GROUND FLOOR



LOWER GROUND FLOOR



INTERIOR	240 m <sup>2</sup>
EXTERIOR	54 m <sup>2</sup>
TOTAL	294 m <sup>2</sup>

4 3 2

## 29 Springfield Drive, Mollymook

Disclaimer: The artist impressions and floorplans are indicative only, are not to scale and do not form part of any Contract of Sale. Any dimensions, finishes or specifications depicted are subject to change without notice. Consultants and agents do not warrant the accuracy of any information provided and do not accept any liability for negligence, any error, misrepresentation, discrepancy in the information or reliance thereon.

