



12 Wallace Street Mollymook NSW

4 2 2

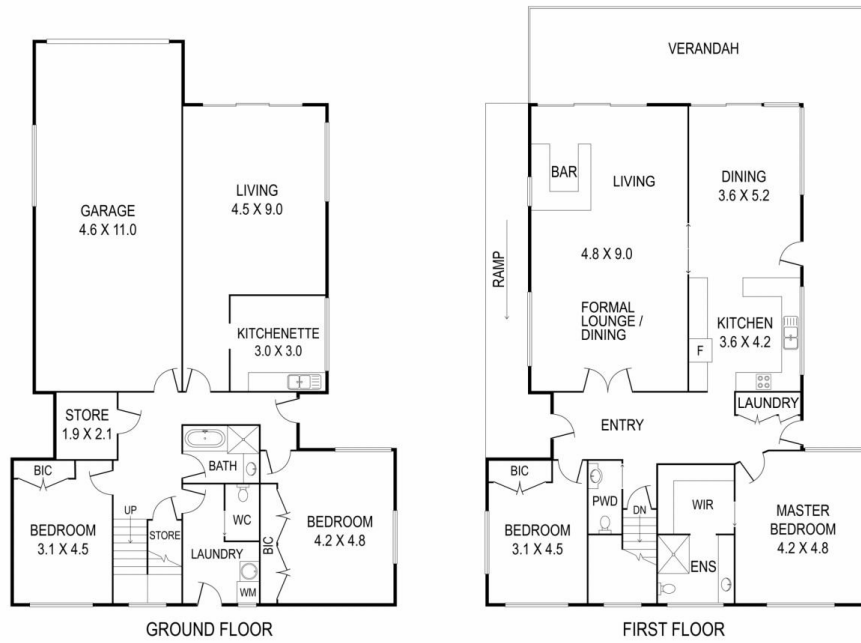
Wake up to amazing sunrises before heading beachside for a morning swim or an early round of golf. Perhaps meet up with friends for coffee or breakfast at one of the local cafes, or head home to enjoy the ocean views and north easterly sea breezes from the privacy of your home.

The generously proportioned, two storey home is located in a quiet, sought after location yet so close to Mollymook Beach and Beachside Golf course. The upper level consists of spacious family open plan living and dining, as well as formal lounge/dining room with a bar, all opening on to the large north facing deck with ocean views. You will love entertaining family and friends in this grand space. The light filled master bedroom features a large, walk in wardrobe and ensuite, plus there is a second bedroom or study and a continental laundry upstairs.

Price : \$1.9mil - \$1.95mil
Building Size : 312 sqm
Land Size : 752 sqm
View : <https://www.coopercoastalproperties.com.au/sale/nsw/shoalhaven/mollymook/residential/house/7323007>



Craig Cooper
0434 311 113



INTERIOR	312 m ²
EXTERIOR	72 m ²
TOTAL	384 m²

12 Wallace Street, Mollymook

4 2.5 2

Disclaimer: The artist impressions and floorplans are indicative only, are not to scale and do not form part of any Contract of Sale. Any dimensions, finishes or specifications depicted are subject to change without notice. Consultants and agents do not warrant the accuracy of any information provided and do not accept any liability for negligence, any error, misrepresentation, discrepancy in the information or reliance thereon.

