



7 Windemere Drive Conjola Park NSW

4 2 2

This near new home located in the peaceful hamlet of Conjola Park is flawless inside and out, you will be impressed by the stunning living and outdoor spaces,

Light and airy interiors, vaulted ceilings, highlight windows and coastal luxe elements create an expansive, contemporary coastal feel throughout the single level designer home.

Design features include:

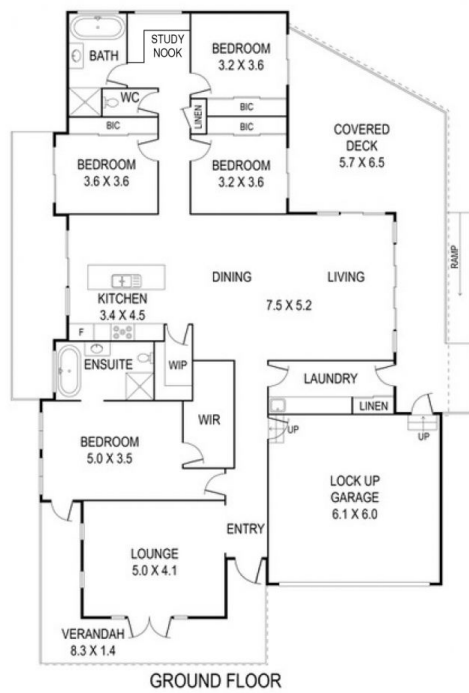
- * Centrally located open plan living living, dining and kitchen with butler's pantry flowing out to an expansive deck for alfresco dining.

- * Spacious family living with quality finishes including hardwood timber floors, reverse cycle air conditioning, fans and cosy slow combustion wood fire.

Price : \$ 1,150,000
Building Size : 228 sqm
Land Size : 701 sqm
View : <https://www.coopercoastalproperties.com.au/sale/nsw/shoalhaven/conjola-park/residential/house/7331928>



Craig Cooper
0434 311 113



INTERIOR	228 m ²
EXTERIOR	473 m ²
TOTAL	701 m ²
4 2 2	

7 Windemere Drive, Conjola Park

Disclaimer: The artist impressions and floorplans are indicative only, are not to scale and do not form part of any Contract of Sale. Any dimensions, finishes or specifications depicted are subject to change without notice. Consultants and agents do not warrant the accuracy of any information provided and do not accept any liability for negligence, any error, misrepresentation, discrepancy in the information or reliance thereon.