

614 Little Forest Road Little Forest NSW

8 4 4

This unique property, privately located in the hills of Little Forest with amazing rural and ocean views, offers the perfect escape to recharge the soul, without sacrificing proximity to essential services. Historic Milton township with its boutique shops, cafes and restaurants is just a 10 minute drive away.

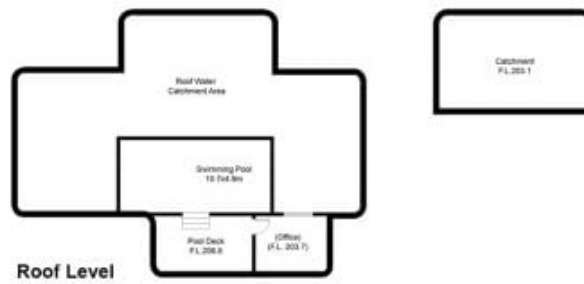
Inspired by Mexican Adobe architecture and commissioned by New Age author, Stuart Wilde, this outstanding home offers a floorplan that combines intimate family spaces, private terraces and courtyards with expansive living and entertaining areas with floor to ceiling windows to soak up the amazing vistas. Echoing the Adobe exterior are brilliant white washed interiors and terracotta tiled flooring with exposed Oregon beams, curved walls, arches, custom made solid doors, feature niches and hand turned timber balustrades, The Eco design provides warmth in winter

Price : \$4.1mil
Building Size : 1099 sqm
Land Size : 30 Acres
View : <https://www.coopercoastalproperties.com.au/sale/nsw/shoalhaven/little-forest/residential/acreagesemirural/7430564>

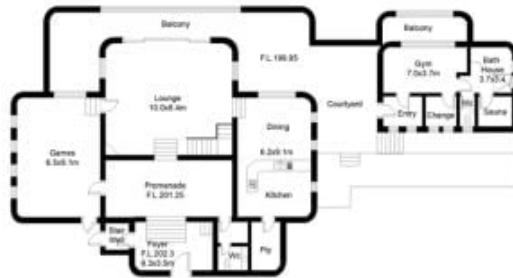


Craig Cooper
0434 311 113

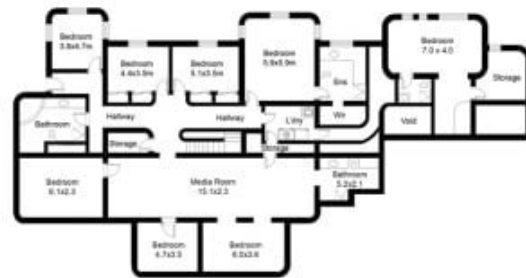
614 Little Forest Road, Milton



Roof Level



First Floor



Ground Floor

Approx Home Area: 1099m²

DISCLAIMER: ALL MEASUREMENTS ARE APPROXIMATE, NOT TO SCALE. FOR ILLUSTRATION PURPOSES ONLY.

