

**16 Braidwood Avenue Burrill Lake NSW**

4  2  2 

This elevated block on the north side of beautiful Burrill Lake has stunning lake and ocean views. There is so much potential. Continue to lease to the current tenants, or redevelop now or in the future. Existing accommodation provides two separately metered 2 bedroom apartments each awesome views, own entry, kitchen and laundry facilities and off street parking.

This prime location invites you to embrace the coastal lifestyle, waking up to birdsong, stroll to nearby cafes and bakery for coffee and croissants, enjoy an early morning swim in the surf, or go fishing, kayaking and paddle boarding on beautiful Burrill Lake.

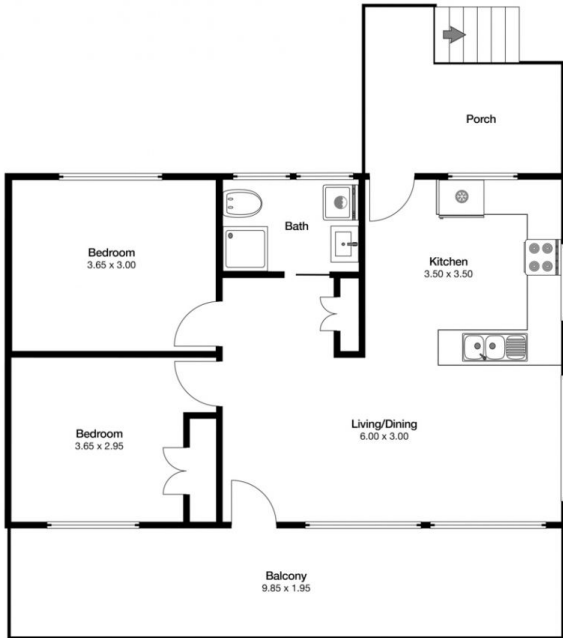
We love:

\* 400 metre walk to the golden sands of Burrill or Racecourse Beach via bush track

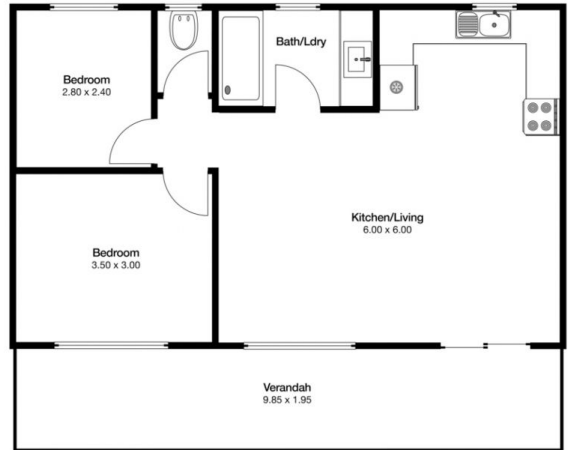
**Building Size** : 113 sqm  
**Land Size** : 556.44 sqm  
**View** : <https://www.coopercoastalproperties.com.au/sale/nsw/shoalhaven/burrill-lake/residential/house/7494538>



**Craig Cooper**  
0434 311 113


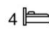
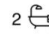



Street Level



Lower Level

# 16 Braidwood Ave Burrill Lake

  
**INTERIOR** **113m2**  
 4  2  0 

**Disclaimer:** The artist impressions and floorplans are indicative only, are not to scale and do not form part of any Contract of Sale. Any dimensions, finishes or specifications depicted are subject to change without notice. Consultants and agents do not warrant the accuracy of any information provided and do not accept any liability for negligence, any error, misrepresentation, discrepancy in the information or reliance thereon.

