



### 1/26 Woodglen Crescent Mollymook NSW

3  2  1 

Ideal for downsizers or as a low maintenance holiday pad, this well located three bedroom villa ticks lots of boxes.

Nestled in a tightly held, quiet leafy crescent, just minutes walk to either Mollymook or Narrawallee beach and seconds to Tallwood Shops making coastal life so easy.

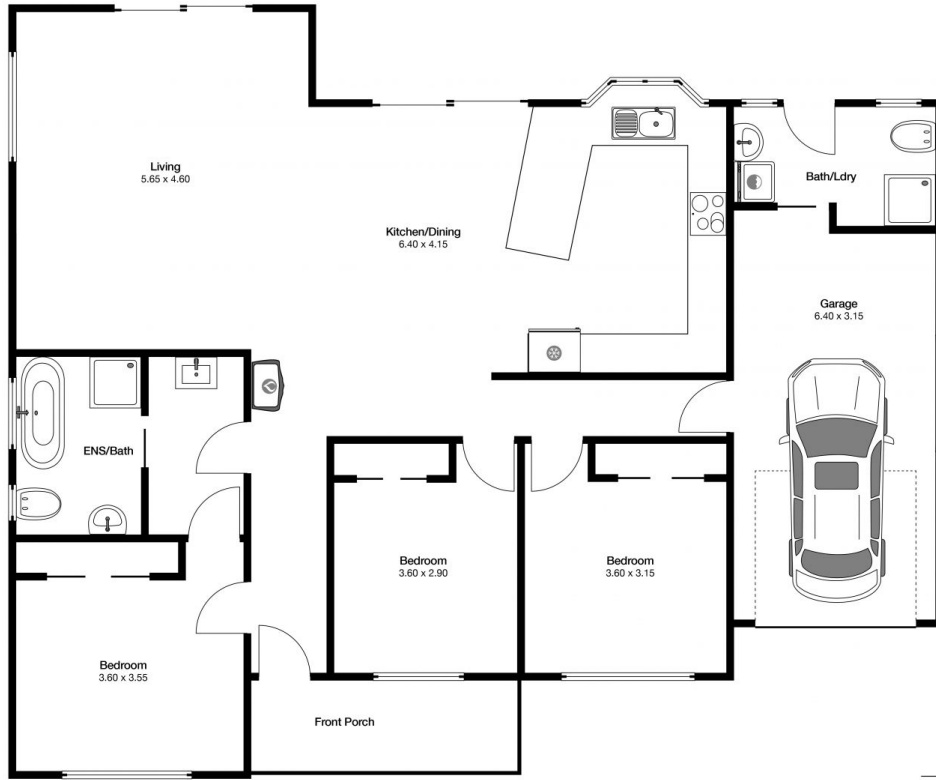
Take a 500 metre stroll to Mollymook Beach for an early morning dip or to walk the dog, picking up morning coffee and deli treats, wine or groceries from your local Mollymook village shops on the way back. Great dining options close by include Bannisters Pavillion and Gwylo - no need to take the car.

Enjoy single level living with renovated bathrooms, parquetry timber floors, air conditioning and a new Scandi slow combustion wood fire. Fully fenced, low maintenance

**Price** : \$ 816,000  
**Building Size** : 138 sqm  
**Land Size** : 396 sqm  
**View** : <https://www.coopercoastalproperties.com.au/sale/nsw/shoalhaven/mollymook/residential/house/7588750>



**Craig Cooper**  
0434 311 113



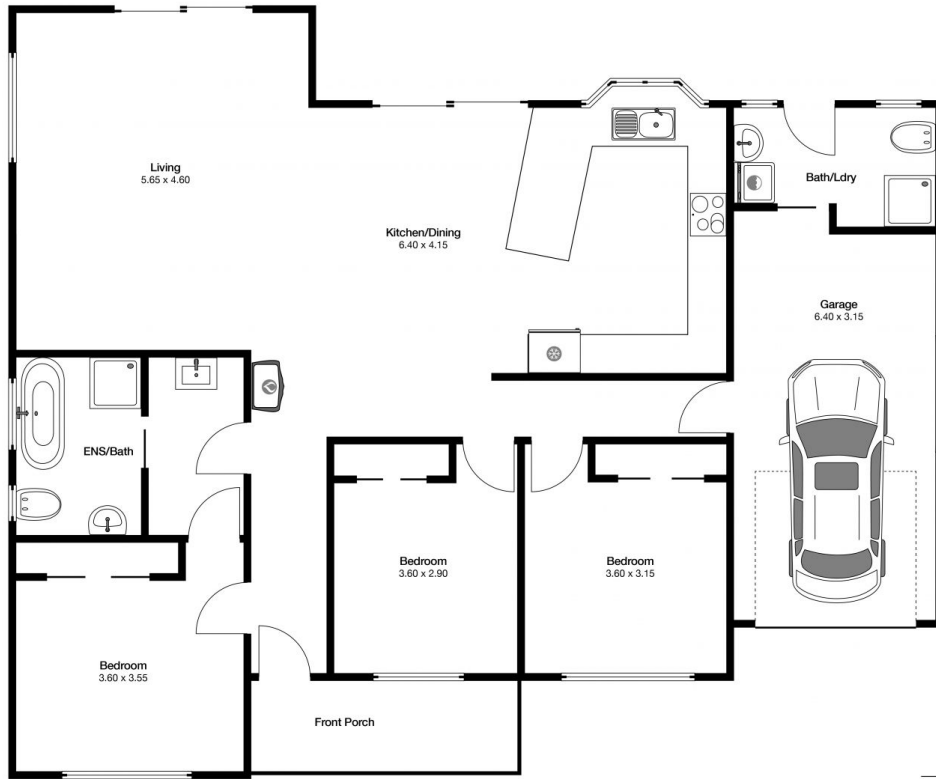
INTERIOR 135m<sup>2</sup>

3 2 1

## 1/26 Woodglen Cres Mollymook



**Disclaimer:** The artist impressions and floorplans are indicative only, are not to scale and do not form part of any Contract of Sale. Any dimensions, finishes or specifications depicted are subject to change without notice. Consultants and agents do not warrant the accuracy of any information provided and do not accept any liability for negligence, any error, misrepresentation, discrepancy in the information or reliance thereon.



INTERIOR 135m<sup>2</sup>

3 2 1

## 1/26 Woodglen Cres Mollymook Beach



**Disclaimer:** The artist impressions and floorplans are indicative only, are not to scale and do not form part of any Contract of Sale. Any dimensions, finishes or specifications depicted are subject to change without notice. Consultants and agents do not warrant the accuracy of any information provided and do not accept any liability for negligence, any error, misrepresentation, discrepancy in the information or reliance thereon.

