



669A Woodburn Road Morton NSW

1  3 

Combining the perfect balance of bush and cleared land, this picturesque acreage awaits its new owners. Live in the powered shed while you build your family home. Electricity, water and septic are already installed.

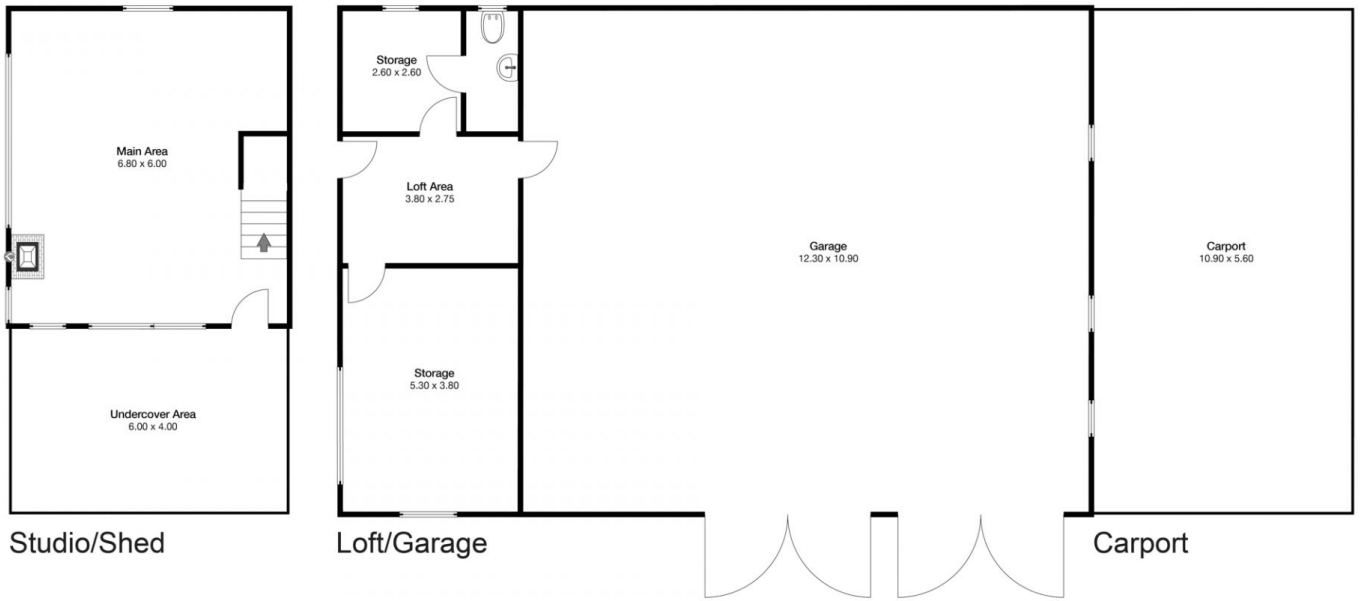
With established olive grove and fruit trees, four dams and a creek, plus 2 water tanks, internal roads, and approximately 50 acres cleared, this property would be suitable for livestock, agribusiness or hobby farm. Use it to relax, grow veggies and fruit, run chooks and get back to nature. Or simply use it for weekend getaways until you make the big break to your rural retreat.

We love:
48.99 Hectares/120 acres
Zoning - RU2 Rural Landscape
300 metre gravel access road from Woodburn Road with





Price : \$1.7mil - \$1.8mil
Land Size : 48.99 ha
View : <https://www.coopercoastalproperties.com.au/sale/nsw/shoalhaven/morton/residential/rural/7605949>



Craig Cooper
0434 311 113



669A Woodburn Rd Morton


INTERIOR **300m²**
 0  1  3 



Disclaimer: The artist impressions and floorplans are indicative only, are not to scale and do not form part of any Contract of Sale. Any dimensions, finishes or specifications depicted are subject to change without notice. Consultants and agents do not warrant the accuracy of any information provided and do not accept any liability for negligence, any error, misrepresentation, discrepancy in the information or reliance thereon.

