



30 Vigilant Street Ulladulla NSW

6  4  2 

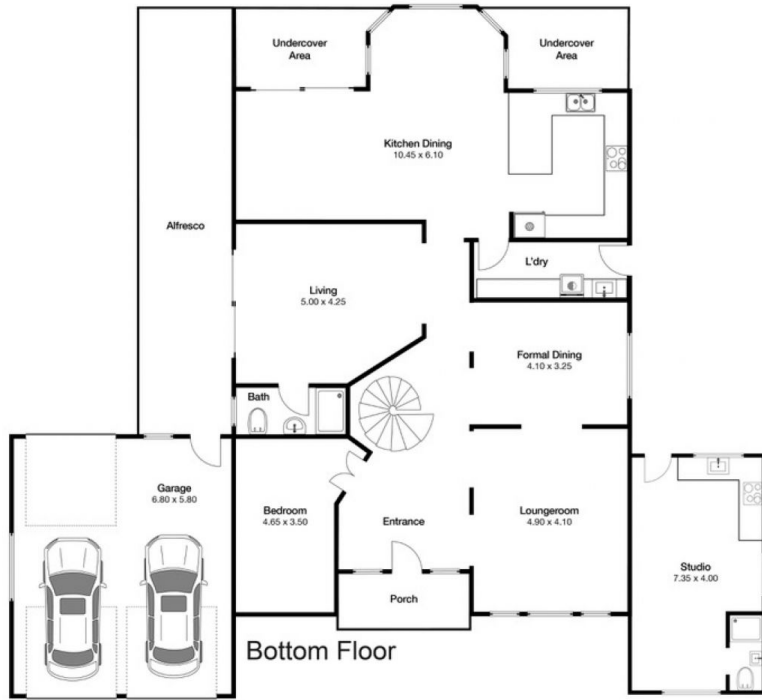
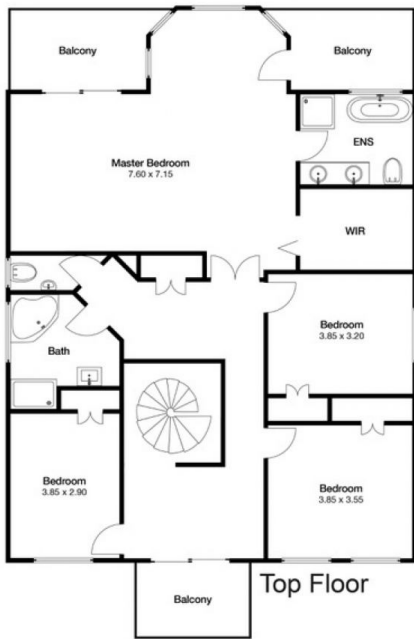
Aesthetically designed and finished with quality appointments this 'Hamptons' inspired residence benefits from a centrally positioned location within reach of beaches, schools, shops and Leisure Centre.

Generously proportioned, the immaculate home offers expansive ocean views. As you step inside, you'll be greeted by a space that effortlessly blends entertainment and relaxation. The open plan design with high ceilings facilitates a seamless blend throughout the home, allowing for easy movement and socialising. From the inviting living areas, well appointed kitchen, the outdoor terrace to the sumptuous Master suite, and the separate granny flat currently rented at \$340 a week for 12 months, every inch of this home has been meticulously curated to ensure functionality and high-quality design.

Building Size : 410 sqm
Land Size : 875.5 sqm
View : <https://www.coopercoastalproperties.com.au/sale/nsw/shoalhaven/ulladulla/residential/house/7656671>



Craig Cooper
0434 311 113



INTERIOR 410m²

6 4 2

30 Vigilant St Ulladulla



Disclaimer: The artist impressions and floorplans are indicative only, are not to scale and do not form part of any Contract of Sale. Any dimensions, finishes or specifications depicted are subject to change without notice. Consultants and agents do not warrant the accuracy of any information provided and do not accept any liability for negligence, any error, misrepresentation, discrepancy in the information or reliance thereon.

