



209 Mitchell Parade Mollymook Beach NSW

3  3  2 

Perched high on Bannister Point headland this architecturally designed 3 bedroom home enjoys stunning ocean views as far as Point Perpendicular in the north and south to Ulladulla lighthouse.

Embrace relaxed coastal living, with ocean vistas from nearly every room and balcony. Wake to the sounds of waves crashing below or whales slapping their tails, watch as eagles soar above the trees that frame the ocean vistas.

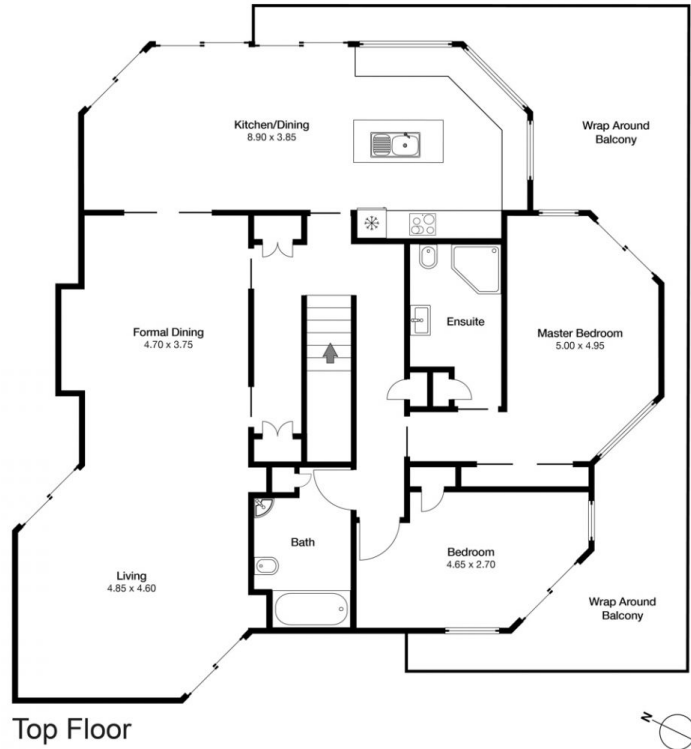
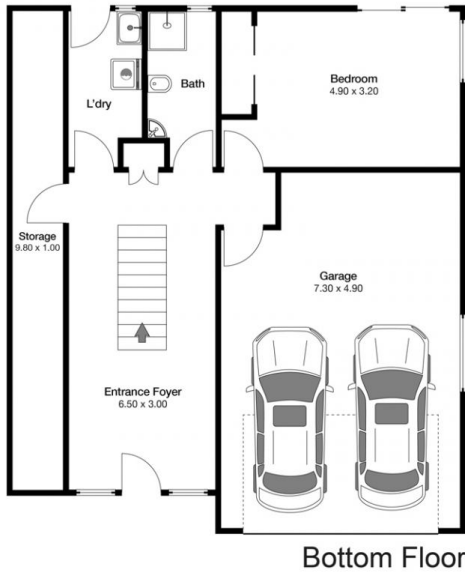
Enjoy early morning headland nature walks, take a dip in beautiful Mollymook Beach, enjoy a round of golf at either Beachside or Hilltop Championship golf course or indulge in fine dining. Options include neighbouring Rick Stein's; Gwylo or Bannister Pavillion; or cook up a storm for family and friends in the renovated kitchen looking out to sea.

This light and airy home, designed in the late 80s, enjoys a

Price : \$2.7mil
Building Size : 242 sqm
Land Size : 607 sqm
View : <https://www.coopercoastalproperties.com.au/sale/nsw/shoalhaven/mollymook-beach/residential/house/7750455>



Craig Cooper
0434 311 113



209 Mitchell Pde Mollymook Beach

INTERIOR 242m²

3 3 2



Disclaimer: The artist impressions and floorplans are indicative only, are not to scale and do not form part of any Contract of Sale. Any dimensions, finishes or specifications depicted are subject to change without notice. Consultants and agents do not warrant the accuracy of any information provided and do not accept any liability for negligence, any error, misrepresentation, discrepancy in the information or reliance thereon.

