



6 Abbey Road Ulladulla NSW

3  2  3 

This 3 bedroom brick home set in a leafy quiet street backing onto bush reserve is perfect for families or downsizers, and only a short distance from shopping centres, schools and beaches.

The single level layout features 2 living areas, 3 bedrooms, 2 bathrooms, and a large outdoor entertaining area overlooking the garden and to the bush reserve at the rear of the property. The living areas have easy care timber look vinyl planks and bedrooms are carpeted. There is plenty of parking with 2 car garage with storage/workshop area plus a carport with rear access to the yard.

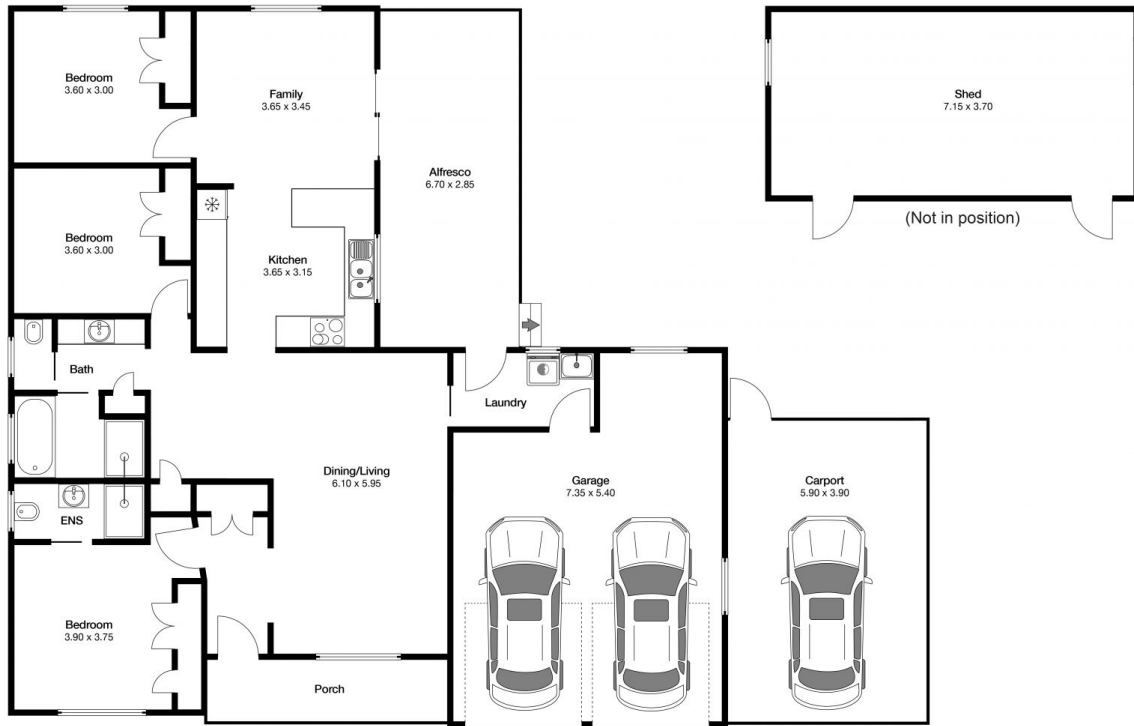
The spacious 785m² block offers plenty of room for the family pet or kids to play and features a fire pit, veggie patch and a large garden shed.

Land Size : 785.7 sqm

View : <https://www.coopercoastalproperties.com.au/sale/nsw/shoalhaven/ulladulla/residential/house/7760793>



Craig Cooper
0434 311 113



INTERIOR 206m²

3 2 3

6 Abbey Rd Ulladulla



Disclaimer: The artist impressions and floorplans are indicative only, are not to scale and do not form part of any Contract of Sale. Any dimensions, finishes or specifications depicted are subject to change without notice. Consultants and agents do not warrant the accuracy of any information provided and do not accept any liability for negligence, any error, misrepresentation, discrepancy in the information or reliance thereon.

