



38 Gordon Street Milton NSW

4  2  1 

Perfectly positioned on the eastern side of the town, with its picturesque rural countryside, this lovely light filled cottage epitomises the old world charm of Milton.

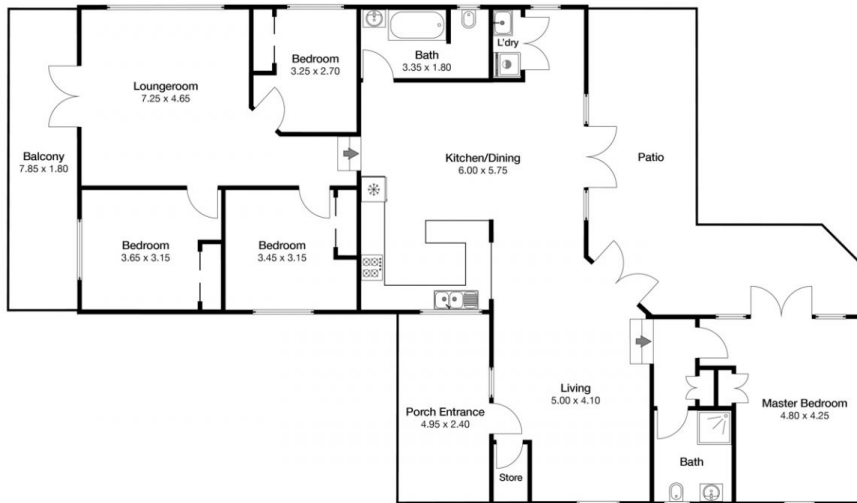
Enjoy morning coffees on the private front verandah or spend afternoons relaxing with a book and a drink on the rear terrace overlooking native gardens full of birdlife. Take a short stroll to the eateries, boutiques, shops, schools and all that Milton has to offer. For beach lovers, the white sands of Mollymook & Narrawallee beaches are a short 6 minute drive (4.5km).

The 4 bedroom home features renovated kitchen, 2 bathrooms and two living areas. With sunny north aspects, reverse cycle air conditioning, and louvres to capture the coastal breeze, ensuring your year round comfort.

Price : \$1.3mil - \$1.35mil
Land Size : 803.5 sqm
View : <https://www.coopercoastalproperties.com.au/sale/nsw/shoalhaven/milton/residential/home/7817180>



Craig Cooper
0434 311 113



(not in position)



INTERIOR 235m²

4 2 0

38 Gordon St Milton



Disclaimer: The artist impressions and floorplans are indicative only, are not to scale and do not form part of any Contract of Sale. Any dimensions, finishes or specifications depicted are subject to change without notice. Consultants and agents do not warrant the accuracy of any information provided and do not accept any liability for negligence, any error, misrepresentation, discrepancy in the information or reliance thereon.

