

27 Lake Conjola Entrance Road Lake Conjola NSW

3 3 2

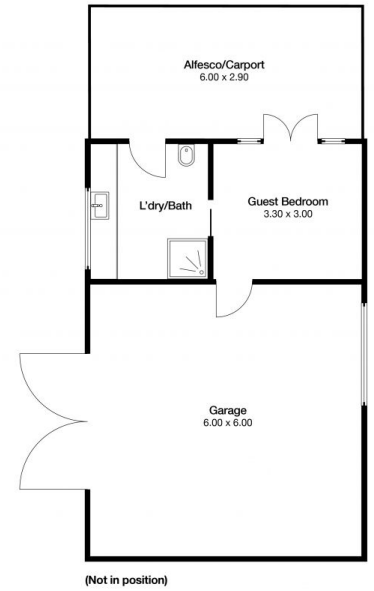
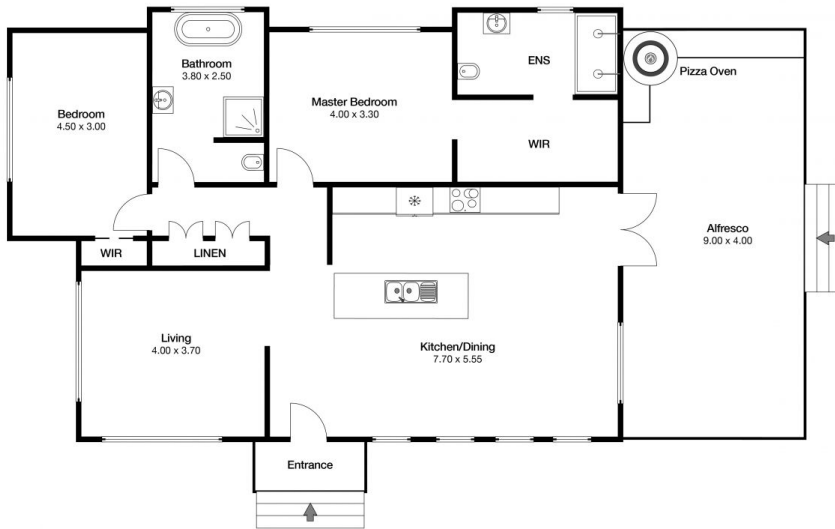
Live the relaxed and peaceful lake lifestyle in this bespoke coastal cottage within easy reach of both the lake and the beach. Wake early and take a level 500 metre walk to the lake or a 900 metre walk to Conjola Beach. Surfers will be impressed with the reef break off Green Island, at the mouth of the lake. Or throw in a fishing line or paddle board and explore the beautiful waters of the lake.

Move in to this recently finished, completely renovated coastal home with classic high ceilings, wide profile timber floors and casement windows. Bathrooms feature Spanish hand cut tiles and blackbutt timber vanities. The kitchen will impress with stone bench tops and island plus accent timber shelving and panelling to the breakfast island. Entertainers will be spoilt with options from Induction cooktop and gas ring for stir fries to pizza oven and outdoor kitchen on the huge north facing timber deck.

Building Size : 220 sqm
Land Size : 657.61 sqm
View : <https://www.coopercoastalproperties.com.au/sale/nsw/shoalhaven/lake-conjola/residential/house/7829768>



Craig Cooper
0434 311 113



INTERIOR 220m²

3 3 2

27 Lake Conjola Entrance Rd Lake Conjola



Disclaimer: The artist impressions and floorplans are indicative only, are not to scale and do not form part of any Contract of Sale. Any dimensions, finishes or specifications depicted are subject to change without notice. Consultants and agents do not warrant the accuracy of any information provided and do not accept any liability for negligence, any error, misrepresentation, discrepancy in the information or reliance thereon.

