



70 Cornfield Parade Fishermans Paradise NSW

4  3  2 

Offering peace and tranquillity this little piece of paradise provides a beautiful place where you can relax and rejuvenate. This exquisite acre of land is nestled amongst rural allotments in the quiet hamlet of Fishermans Paradise, just 200 metres to the boat ramp and access to beautiful Lake Conjola and just a short drive to Milton and the surrounding beaches.

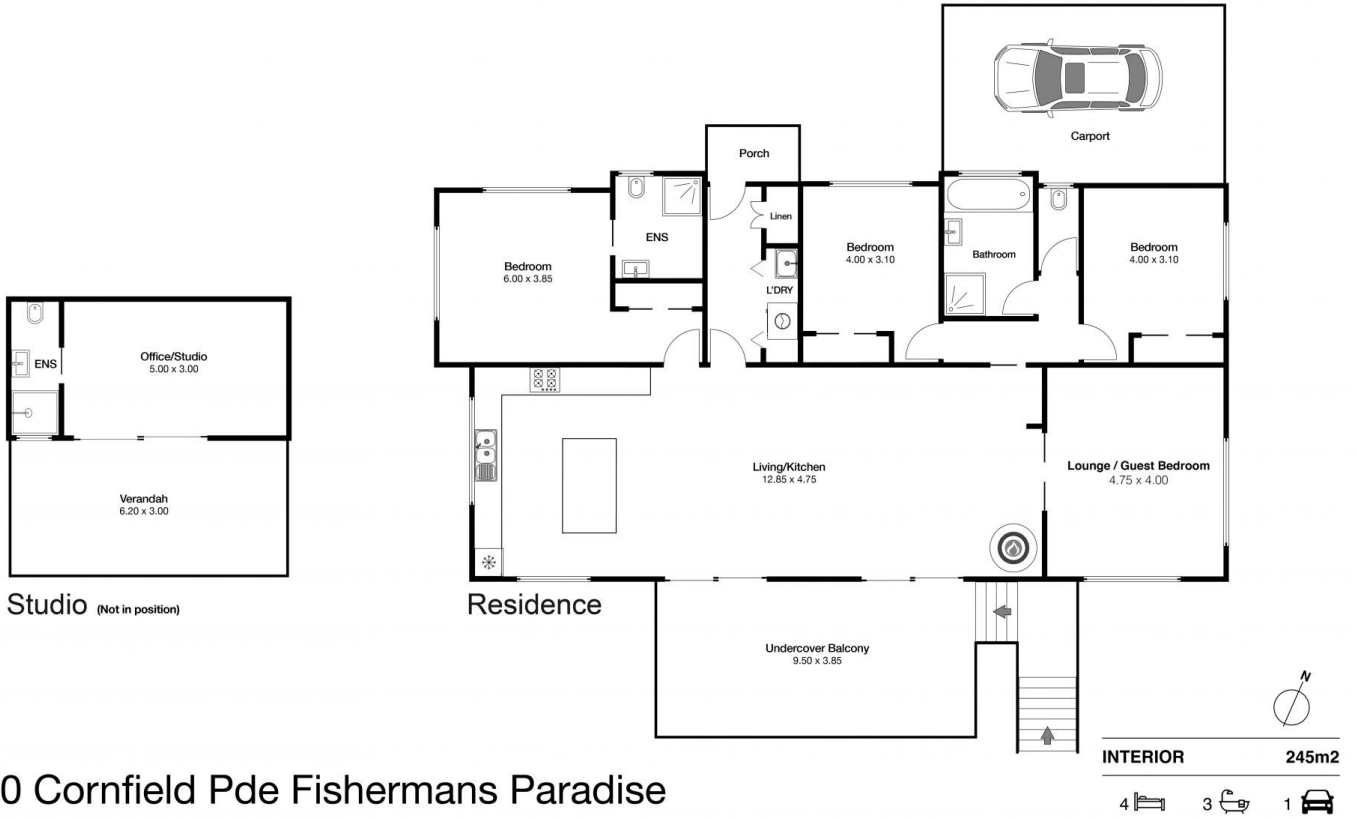
The stunning house is only 5 years old and has been designed to capture the leafy views and an abundance of light throughout. It is a stylish and comfortable home with spotted gum timber flooring and a covered timber deck overlooking the 8 x 3m salt water swimming pool with travertine pavers and it is surrounded by glorious gardens.

The home sits lightly on the land, with environmentally friendly design and materials and is positioned to capture

Price : Price by Negotiation
Building Size : 245 sqm
Land Size : 4723 sqm
View : <https://www.coopercoastalproperties.com.au/sale/nsw/shoalhaven/fishermans-paradise/residential/house/7856171>



Craig Cooper
0434 311 113



70 Cornfield Pde Fishermans Paradise



Disclaimer: The artist impressions and floorplans are indicative only, are not to scale and do not form part of any Contract of Sale. Any dimensions, finishes or specifications depicted are subject to change without notice. Consultants and agents do not warrant the accuracy of any information provided and do not accept any liability for negligence, any error, misrepresentation, discrepancy in the information or reliance thereon.

