



31 Myrtle Street Milton NSW

4  2  1 

Secluded in your own tranquil oasis, yet only minutes to the lively hub of historic Milton township, this character filled home enjoys a light, airy ambiance and leafy, rural outlook.

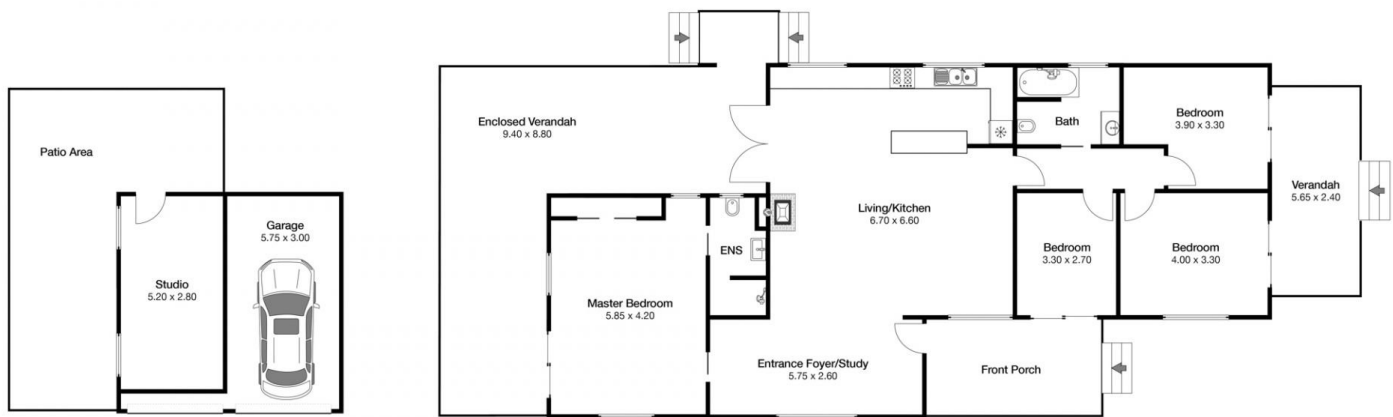
The country cottage style incorporates a bespoke kitchen, timber floors, slow combustion wood fire, skylights and an abundance of decks offering private spaces to read a book, relax with a drink, entertain friends & family and watch spectacular sunsets.

The spacious master bedroom is the perfect retreat for parents with large built in wardrobe, ensuite and balcony with rural views. The other 3 bedrooms all have sliders with access to balconies. Both bathroom and ensuite have been renovated. Downstairs offers a studio/music room, an undercover area perfect for a game of table tennis, and

Price : Price by Negotiation
Building Size : 271 sqm
Land Size : 1027 sqm
View : <https://www.coopercoastalproperties.com.au/sale/nsw/shoalhaven/milton/residential/house/7956947>



Craig Cooper
0434 311 113



31 Myrtle St Milton

N	
INTERIOR	271m ²
4	2
1	



Disclaimer: The artist impressions and floorplans are indicative only, are not to scale and do not form part of any Contract of Sale. Any dimensions, finishes or specifications depicted are subject to change without notice. Consultants and agents do not warrant the accuracy of any information provided and do not accept any liability for negligence, any error, misrepresentation, discrepancy in the information or reliance thereon.

