






### 28 Kurrajong Crescent Conjola Park NSW

3  3  4 

This near new home located in the peaceful hamlet of Conjola Park is flawless inside and out, you will be impressed by the stunningly curated living and outdoor spaces.

Light and airy interiors, with louvre windows to capture the cooling, coastal breezes and luxe elements create a contemporary feel throughout the thoughtfully designed home. Well appointed, the home consists of three bedrooms, two with their own ensuites and all with built in robes. The open plan living/dining/kitchen is perfect for entertaining and opens out to an elevated rear deck with picturesque valley views. Enjoy a beautiful, relaxed and peaceful lifestyle with terraced and landscaped gardens beckoning you outside to soak in the hot tub or gather

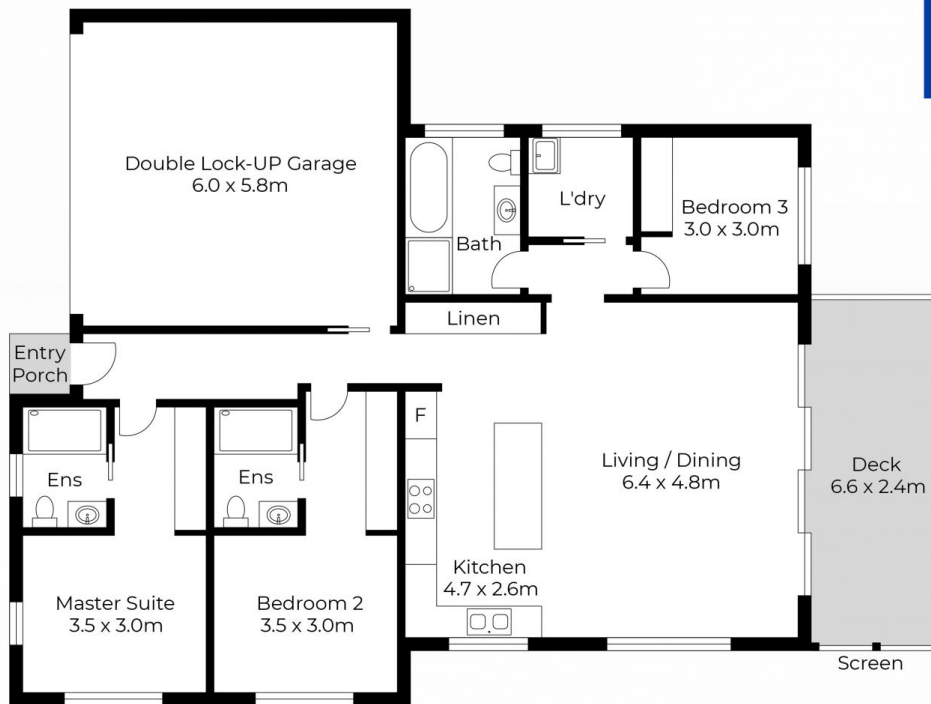
**Type** : House  
**Price** : Price by Negotiation  
**Building Size** : 156 sqm  
**Land Size** : 556 sqm  
**View** : <https://www.coopercoastalproperties.com.au/sale/nsw/shoalhaven/conjola-park/residential/house/8124875>



**Craig Cooper**  
0124 211 112

[For full version visit the website](https://www.coopercoastalproperties.com.au)

## 28 Kurrajong Crescent, Conjola Park



APPROXIMATE AREA  
LIVING AREA : 120m<sup>2</sup>  
TOTAL AREA : 171m<sup>2</sup>



Whilst every effort has been made to ensure the accuracy of the floor plan depicted here, measurements are approximate and no responsibility is taken for any error, omission, or mis statement. This plan is for illustrative purposes only.