



550A Croobyar Road Croobyar NSW

4 3 2

Boasting beautiful ocean vistas and views of rolling green hills and surrounding farmland, this expansive brick home is perfectly positioned on an idyllic, private north facing 2.5 acres. Wend your way along the circular gravel driveway which circumnavigates the single level country home with high ceilings, polished timber floors and slow combustion wood fire. Spacious interiors include north facing lounge and living rooms with slow combustion fire opening out to the elevated deck with sensational views, formal dining with bar, country kitchen with breakfast bar and informal dining space. There are four large bedrooms, master with ensuite, family bathroom and internal laundry. The detached double garage incorporates additional guest or teenage accommodation with its own kitchenette, bathroom and laundry, loft bedroom and living/dining space.

Type : Acreage/Semi-Rural
Building Size : 264 sqm
Land Size : 1 ha
View : <https://www.coopercoastalproperties.com.au/8136421>

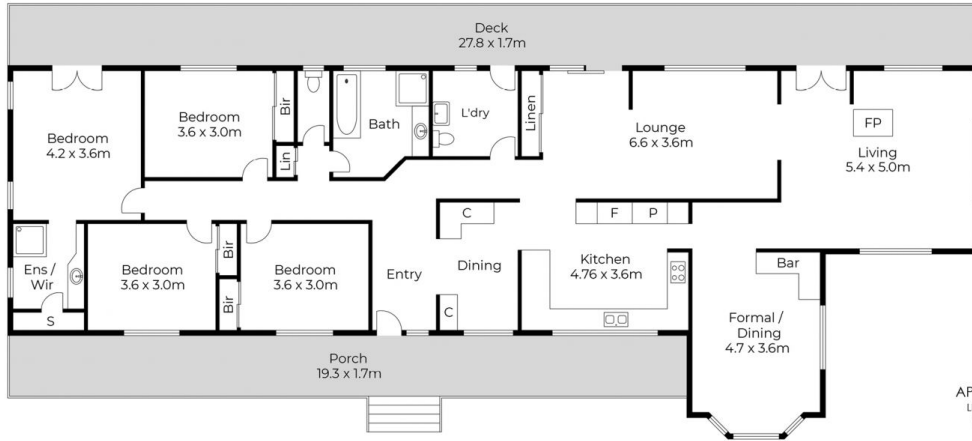
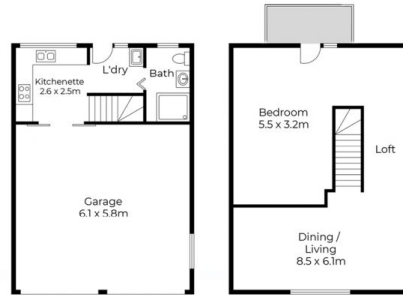


Craig Cooper
0434 311 113

[For full version visit the website](https://www.coopercoastalproperties.com.au)



550a Croobyar Road, Croobyar



APPROXIMATE AREA
LIVING AREA : 264m²
TOTAL AREA : 378m²



Whilst every effort has been made to ensure the accuracy of the floor plan depicted here, measurements are approximate and no responsibility is taken for any error, omission, or mis statement. This plan is for illustrative purposes only.