



40 Martins Ridge Road Conjola NSW

4 🏠 5 🚗 6 🚘

Welcome to Wonjarna, a stunning 8.24 Hectare property, set in the Conjola Valley just 11 km from Milton and approx. 2.5 hours from Sydney and Canberra. From the automatic gates, follow the driveway set amongst mature trees and established gardens to this elegant country homestead. Enjoying an elevated north facing position, overlooking beautiful gardens and rural vistas, the home captures cooling coastal breezes and exudes a relaxed country charm.

Beautifully presented, with high ceilings, skylights, sandstone fireplace and French doors the living spaces are cleverly designed to capture abundant natural light and stunning views. Sit back and bask in the warmth of the slow combustion fire, or enjoy entertaining family and

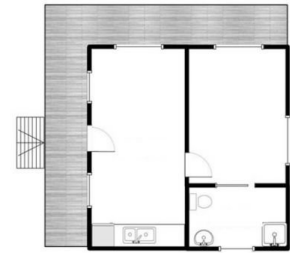
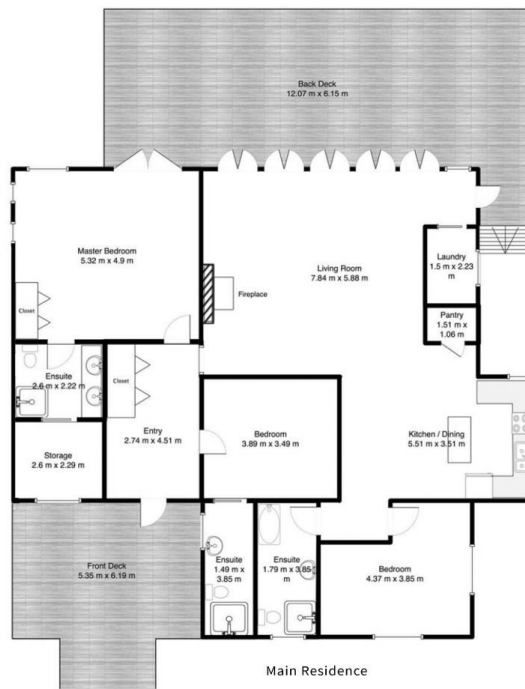
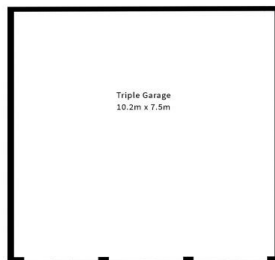
Type : Acreage/Semi-Rural
Price : Price by Negotiation
Land Size : 8.24 ha
View : <https://www.coopercoastalproperties.com.au/sale/nsw/shoalhaven/conjola/residential/acreagesemirural/8140157>



Craig Cooper
0434 311 113

[For full version visit the website](https://www.coopercoastalproperties.com.au)

40 Martins Ridge Road, Conjola



Whilst every effort has been made to ensure the accuracy of the floor plan depicted here, measurements are approximate and no responsibility is taken for any error, omission, or mis statement. This plan is for illustrative purposes only.