



1/7 Kingsley Avenue Ulladulla NSW

4  2  2 

Ideally located at the end of a cul-de-sac, just a 10 minute stroll to Collers and Harbour Beaches, this cleverly designed, spacious and light filled townhouse features a skillion roof with highlight windows and north facing balcony combined with contemporary coastal interiors.

Step inside to discover a generously proportioned open-plan layout which welcomes you with ample natural light, creating a warm and inviting atmosphere. Entertainers will love the designer kitchen with large centre island, gas cooktop and stone counters. The open plan living, dining and kitchen seamlessly transition to a private courtyard. A separate Family/Media Room downstairs could also serve as a large office for those who work from home.

[For full version visit the website](https://www.coopercoastalproperties.com.au)

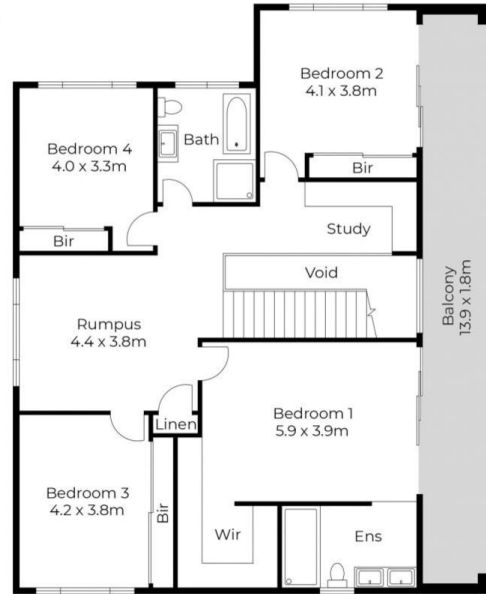
Type : Townhouse
Price : Price by Negotiation
View : <https://www.coopercoastalproperties.com.au/sale/nsw/shoalhaven/ulladulla/residential/townhouse/8140405>



Craig Cooper
0434 311 113



1/7 Kingsley Avenue, Ulladulla



APPROXIMATE AREA
LIVING AREA : 202 m²
TOTAL AREA : 281 m²

Ground Floor

First Floor



Whilst every effort has been made to ensure the accuracy of the floor plan depicted here, measurements are approximate and no responsibility is taken for any error, omission, or mis statement. This plan is for illustrative purposes only.